

KOMATSU®

PC600/600LC-8R1 BACKHOE PC600/600LC-8R1 LOADING SHOVEL

HORSEPOWER

Gross:323 kW 433 HP @ 1800 rpm

Net:320 kW 429 HP @ 1800 rpm

OPERATING WEIGHT

Backhoe:59200–61900 kg

130,510–136,460 lb

Loading shovel:63200–64200 kg

139,330–141,540 lb

PC
600



Photo may include optional equipment.

HYDRAULIC EXCAVATOR

WALK-AROUND

Productivity Features

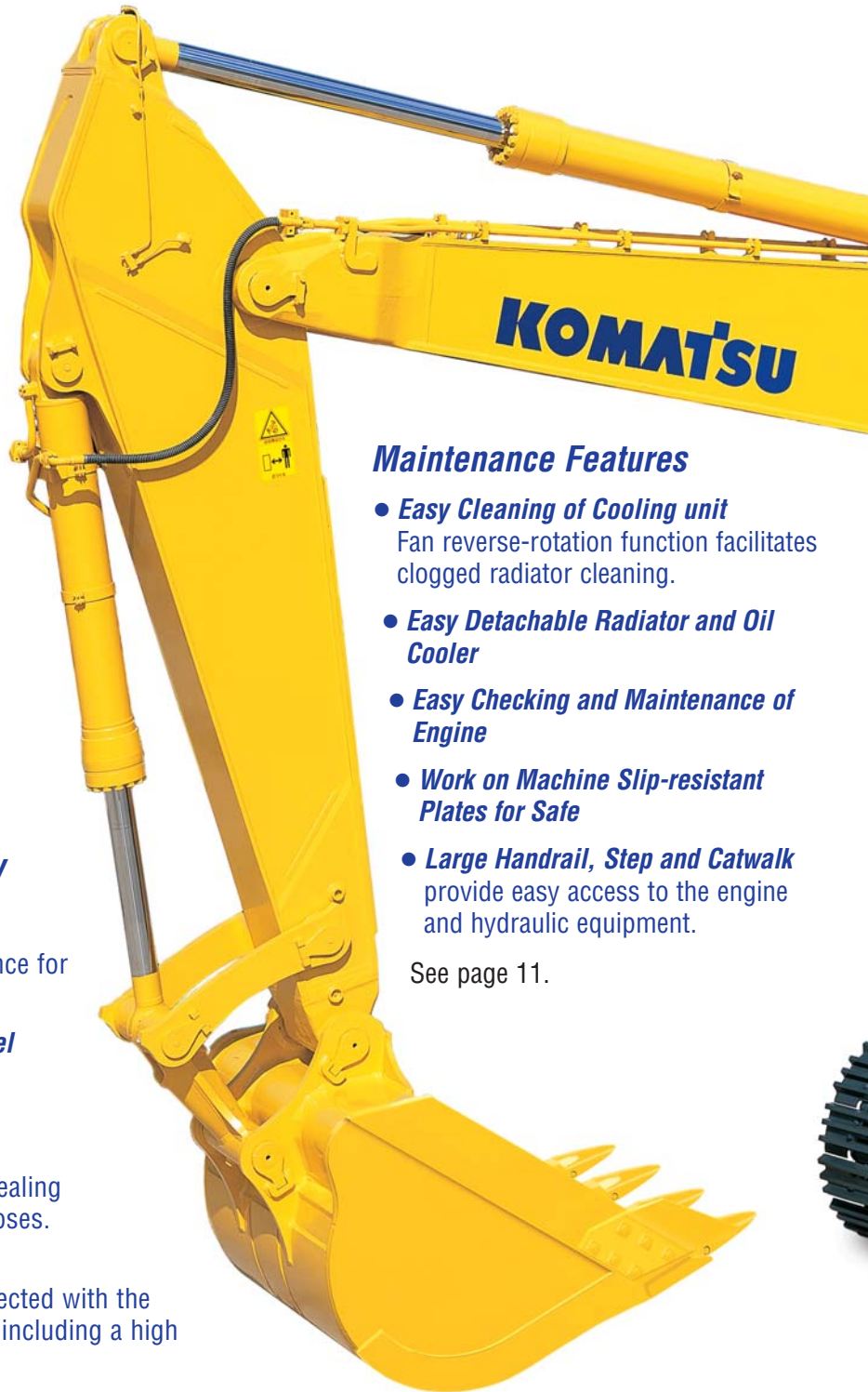
- **High Work Equipment Speed**
Increased arm dumping speed and arm speed of compound operation by arm regeneration circuit realize efficient loading operation.
- **Lifting Mode**
The lifting mode increases the lifting force by 17%.
- **Large Digging Force**
Pressing the Power Max function button temporarily increases the digging force 8%.
- **Two-mode Setting for Boom**
Switch selection allows either powerful digging or smooth boom operation.
- **Large Drawbar Pull and Steering Force**
provide excellent mobility.

See page 5.

Excellent Reliability and Durability

- **Strengthened Boom and Arm**
- **KMAX Bucket** offers superior wear-resistance for specific use in quarry.
- **Removed Water and Contamination in Fuel**
 - Fuel pre-filter with water separator
 - High efficiency fuel filter
 - Water separator
- **O-ring Face Seals**, which have excellent sealing performance, are used for the hydraulic hoses.
- **High-pressure In-line Filtration**
The cool-running hydraulic system is protected with the most extensive filtration system available, including a high pressure in-line filter for each main pump.
- **Highly Reliable Electronic Devices**
Exclusively designed electronic devices have passed severe testing.
 - Controller • Sensors • Connectors
 - Heat resistant wiring

See pages 6, 7.



Maintenance Features

- **Easy Cleaning of Cooling unit**
Fan reverse-rotation function facilitates clogged radiator cleaning.
- **Easy Detachable Radiator and Oil Cooler**
- **Easy Checking and Maintenance of Engine**
- **Work on Machine Slip-resistant Plates for Safe**
- **Large Handrail, Step and Catwalk**
provide easy access to the engine and hydraulic equipment.

See page 11.

Ecology and Economy Features

- **High Power Komatsu SAA6D140E-5 Engine**

A powerful, turbocharged and air-to-air aftercooled Komatsu SAA6D140E-5 provides **320 kW** 429 HP. This engine is U.S. EPA Tier 2 and EU Stage 2 emissions equivalent.

- **Economy mode Four-level Setting**

Enables operator to select the appropriate Economy mode level to match production requirement with lowest fuel consumption.

- **Low Ambient Noise**

- Electronically controlled variable speed fan drive
- Large hybrid fan
- Glasswool-furnished low-noise muffler and noise reducing cover around the muffler

- **Mode Selection**

- Economy mode improves fuel consumption.
- ECO gauge for energy-saving operations
- Extended idling caution for fuel conservation
- Auto deceleration and auto idling system reduce fuel consumption.

See pages 4, 5.



Photo may include optional equipment.

Working Environment

- **Large Comfortable Cab**

- Low-noise cab
- Low vibration with cab damper mounting
- Highly pressurized cab with optional air conditioner (A/C)
- Operator seat and console with armrest that enables operations in the appropriate operational posture.
- OPG top guard level 2 (ISO 10262) capable with optional bolt-on top guard

See pages 8, 9.

Large Liquid Crystal Display (LCD) Monitor

- Easy-to-see and use 7" large multi-function color monitor
- Can be displayed in 12 languages for global support.

See page 10.

HORSEPOWER

Gross:323 kW 433 HP @ 1800 rpm

Net:320 kW 429 HP @ 1800 rpm

OPERATING WEIGHT

Backhoe

59200 – 61900 kg

130,510 – 136,460 lb

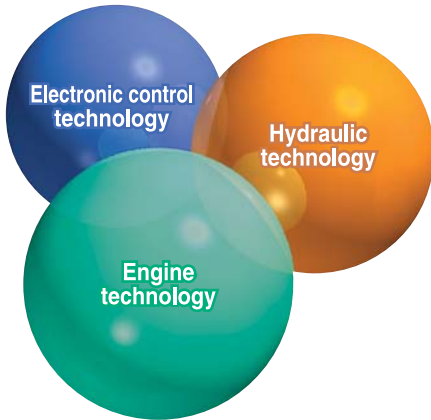
Loading shovel

63200 – 64200 kg

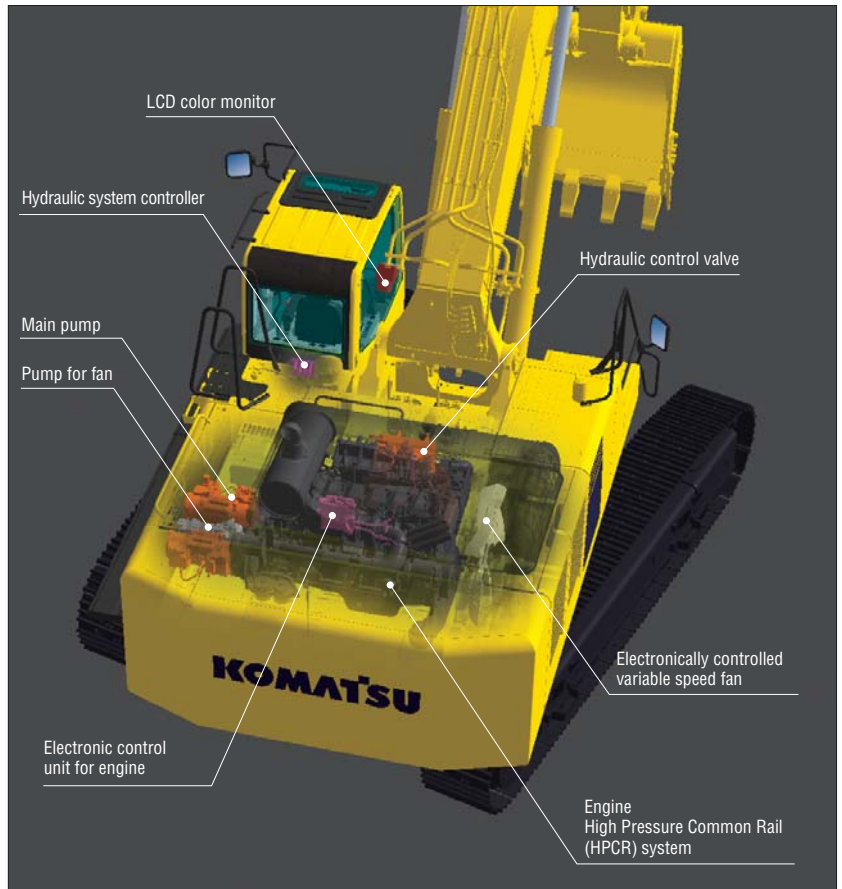
139,330 – 141,540 lb

PRODUCTIVITY & ECOLOGY FEATURES

Komatsu Technology



Komatsu develops and produces all major components, such as engines, electronics and hydraulic components, in house. With this "Komatsu Technology," and adding customer feedback, Komatsu is achieving great advancements in technology. To achieve both high levels of productivity and economical performance, Komatsu has developed the main components with a total control system. The result is a new generation of high performance and environment friendly excavators.



High Power Komatsu SAA6D140E Engine

Powerful turbocharged and air-to-air aftercooled Komatsu SAA6D140E-5 engine provides 320 kW 429 HP. This Komatsu SAA6D140E engine actualizes high-power to low fuel consumption with the optimum fuel injection by electronic HPCR fuel injection system.



Electronically Controlled Variable Speed Fan Contributes to Low Fuel Consumption and Low Noise

The electronic control system sets the revolution speed of the cooling fan according to the coolant, hydraulic oil, and ambient temperature; effectively uses the engine output to prevent wasteful fuel consumption; and reduces noise during low-speed fan revolution.

Lower and Economical Fuel Consumption Using Economy Mode

Enables operator to set the Economy mode to four levels according to working conditions so that production requirement is achieved at the lowest fuel consumption.



Low Ambient Noise

Reduced noise by adoption of an electronically controlled variable speed fan drive, large hybrid fan and low-noise muffler.

ECO Gauge that Assists Energy-saving Operations

ECO gauge is equipped for environment friendly energy-saving operations. Operation in the green range allows reduction of CO₂ emission and fuel consumption.



ECO gauge

Idling Caution

To prevent unnecessary fuel consumption, an idling caution is displayed on the monitor if the engine idles for 5 minutes or more.



Auto Deceleration and Auto Idling System

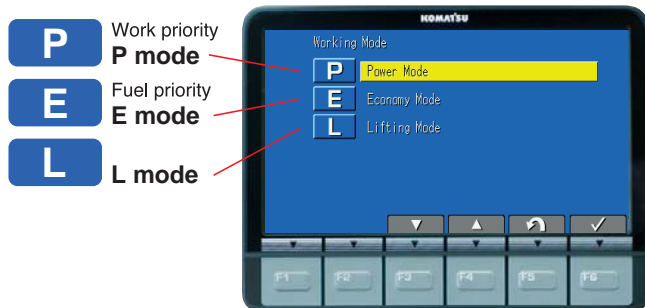
Auto deceleration system is equipped to reduce fuel consumption and operating noise. Also, engine idling speed can be reduced on the monitor with the auto idling system.

Working Modes Selectable

P and E work modes are further improved.

P mode – Power or work priority mode has low fuel consumption, but fast equipment speed and maximum production and power are maintained.

E mode – Economy or fuel saving mode further reduces fuel consumption, but maintains the P-mode-like work equipment speed for light duty work.



You can select Power or Economy modes using a one-touch button on the monitor panel depending on the workload.

Large Drawbar Pull and Steering Force

Since the machine has a large drawbar pull and a high steering force, it demonstrates excellent mobility even when it is on inclined sites.

Large Digging Force

With the addition of one-touch Power Max. function digging force is further increased. (8 seconds of operation)

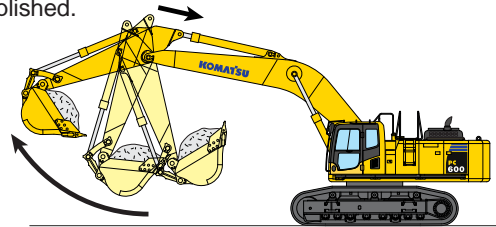
Maximum arm crowd force (ISO 6015):
228 kN (23.3 ton) ➔ **246 kN (25.1 ton)** **8% UP**
(with Power Max.)

Maximum bucket digging force (ISO 6015):
294 kN (30.0 ton) ➔ **317 kN (32.3 ton)** **8% UP**
(with Power Max.)

*Measured with Power Max function, 3500 mm 11'6" arm and ISO 6015 rating

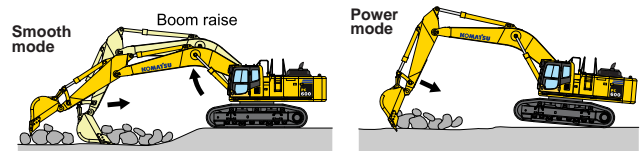
Work Equipment Speed Increased

Work equipment speed and arm speed of compound operation becomes greater with arm quick return circuit and arm regeneration circuit. Quick loading work is now accomplished.



Two-mode Setting for Boom

Smooth mode provides easy operation for gathering blasted rock and scraping operations. When maximum digging force is needed, switch to power mode for more effective excavating.



Lifting Mode

Gives 17% more lifting force when needed for handling rock or heavy lifting applications.

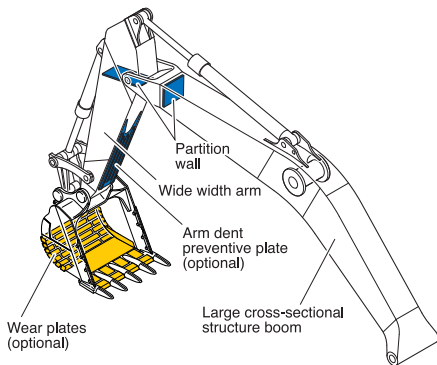


Photo may include optional equipment.

RELIABILITY FEATURES

Strengthened Boom and Arm (optional)

Thanks to the large cross-sectional structure employing a high tensile strength steel with a thick plate, partition wall, etc., the boom and arm exhibit excellent durability and are highly resistant to bending and torsional stress.



O-ring Face Seal

The hydraulic hose seal method has been changed from a conventional taper seal to an O-ring seal. This provides improved sealing performance during operation.

Frame Structure

The revolving frame mount and center frame mount on the swing circle are no welding structure so that force is transmitted directly to the thick plate of the frame without passing through any welding.

Fuel Pre-filter (with Water Separator)

Removes water and contaminants from fuel to enhance the fuel system reliability.

High Efficiency Fuel Filter

Fuel system reliability is even better with high efficiency fuel filter.

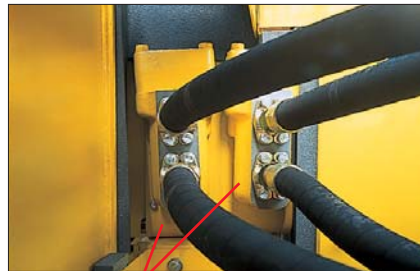


Fuel pre-filter

Fuel filter

High-pressure In-line Filtration

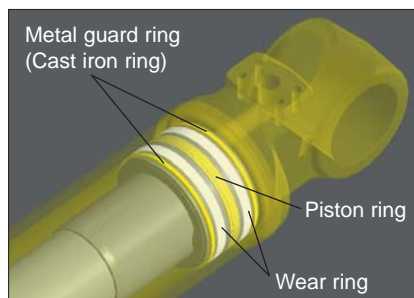
The PC600-8R1 has the most extensive filtration system available, providing in-line filters as standard equipment. An in-line filter in the outlet port of each main hydraulic pump reduces failures caused by contamination.



In-line filter

Metal Guard Rings

Metal guard rings protect all the hydraulic cylinders and improve reliability.



Metal guard ring (Cast iron ring)

Piston ring

Wear ring

Heat-resistant Wiring

Heat-resistant wiring is used for the engine electric circuit and other major component circuit.

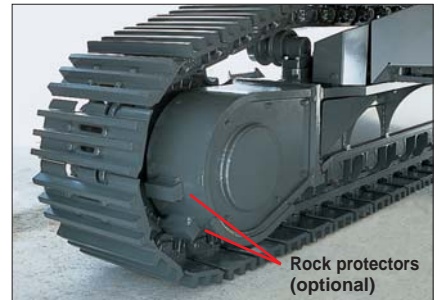
Water Separator

Removes water from the fuel and improves the reliability of fuel systems.



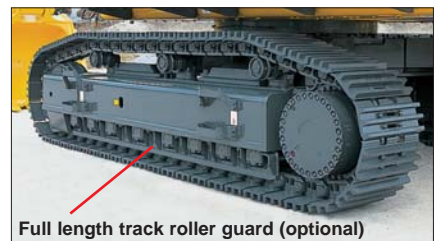
Sturdy Undercarriage

The undercarriage is strengthened to provide excellent reliability and durability when working on rocky ground or blasted rock.



Rock protectors (optional)

Sturdy guards shield the travel motors and piping against damage from rocks. (Rock protectors are optional.)



Full length track roller guard (optional)

Strengthened Revolving Frame Underguard

Guards the machine piping against being hit by rocks from below and prevents hydraulic components and the engine from being damaged.

Sealed Connectors

Sealed connectors seal tight and have higher reliability.

Circuit Breaker

With circuit breaker, the machine can be easily restarted after repair.



Strengthened Quarry Bucket Provides Outstanding Wear-resistance (optional)

The PC600-8R1 has the bucket for specific use in quarry, this is strong in impact and wear, and providing high performance and long life.

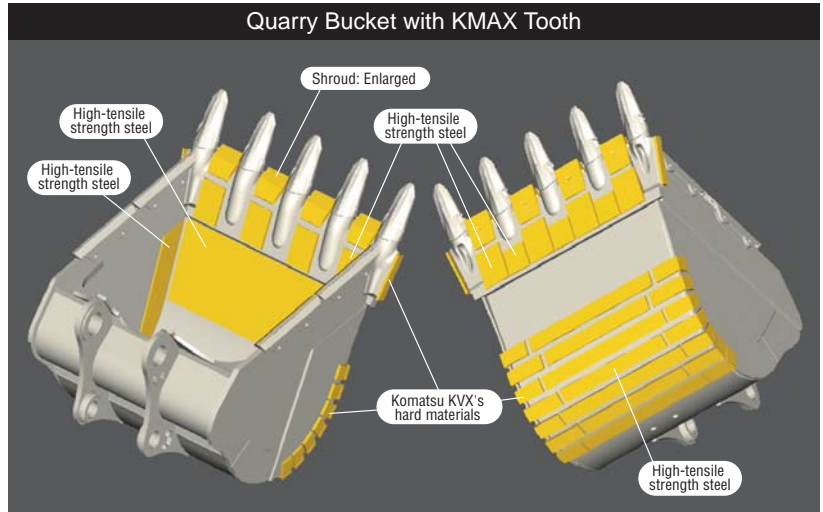
Komatsu KVV's hard materials* provide excellent wear resistance. Combined with adoption of long-life KMAX tooth, durability of bucket is drastically enhanced.

* Komatsu KVV's hard materials:

Komatsu KVV developed, wear-resistant, reinforced materials. Brinell hardness: 500 or more (180kg/mm² class). Features high wear-resistance and little quality change by the heat generated during rock loading, maintaining the hardness for a long term.

KMAX Tooth

- Unique bucket tooth shape for superior digging performance
- Long-term high sharpness
- Great penetration performance
- Hammerless, safe, and easy tooth replacement (Tooth replacement time: Half of the conventional machine.)



STEP 1



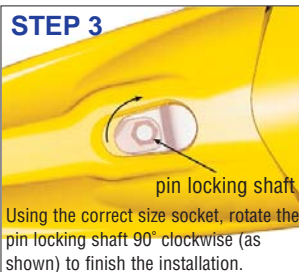
Observing proper safety procedures, place tooth onto adapter (as shown).

STEP 2



Insert fastener, making sure it is in the unlocked position (as shown).

STEP 3



Using the correct size socket, rotate the pin locking shaft 90° clockwise (as shown) to finish the installation.

STEP 4



To remove fastener, use the correct size socket to rotate the pin locking shaft 90° counter-clockwise (as shown). Remove fastener and tooth. Repeat steps 1-3 for a new installation.



Photo may include optional equipment.

WORKING ENVIRONMENT



OPG top guard level 2 (ISO 10262) (optional)

Photo may include optional equipment.

Low Noise Design Cab

The newly-designed cab is highly rigid and has excellent sound absorption ability. Thorough improvement of noise source reduction and use of low noise engine, hydraulic equipment, and A/C allows the operator to work in quiet condition.

Wide Newly-designed Cab

Newly-designed wide spacious cab includes seat with reclining backrest. The seat height and longitudinal inclination are easily adjusted using a pull-up lever. You can set the appropriate operational position of the armrest and the console. The reclining seat further enables you to place it into the fully flat state with the headrest attached.



Seat with headrest reclined full flat

Pressurized Cab

Optional A/C, air filter and a higher internal air pressure (+6.0 mm Aq +0.2"Aq) prevent external dust from entering the cab.

Multi-position Controls

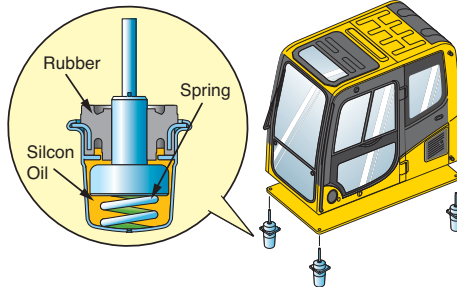
The multi-position, Pressure Proportional Control (PPC) levers allow the operator to work in comfort while maintaining precise control. A double-slide mechanism allows the seat and control levers to move together or independently, allowing the operator to position the controls for maximum productivity and comfort.



Seat sliding amount: 340 mm 13.4"

Low Vibration with Cab Damper Mounting

PC600-8R1 uses viscous damper mounts for the cab that incorporates longer stroke and the addition of a spring. The cab damper mounting combined with high rigidity deck aids vibration reduction at the operator's seat.



Cab Equipments



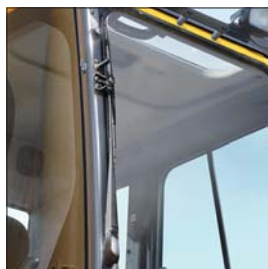
Skylight



Sliding Window and Large Side Mirror



Defroster (optional)



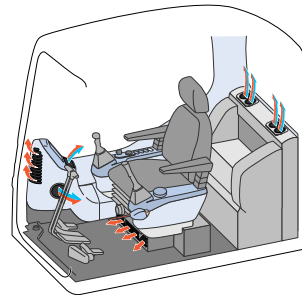
Cab Frame Mounted Wiper



Bottle Holder and Magazine Rack

Automatic A/C (optional)

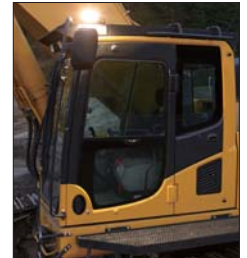
Enables you to easily and precisely set cab atmosphere with the instruments on the large LCD. The bi-level control function keeps the operator's head and feet cool and warm respectively. This improved air flow function keeps the inside of the cab comfortable throughout the year. Defroster function keeps front glass clear.



Safety Features

Step Light with Timer (optional)

provides light for about one minute to allow the operator to get off the machine safely.



Pump/engine Room Partition

prevents oil from spraying on the engine if a hydraulic hose should burst.



Thermal and Fan Guards

are placed around high-temperature parts of the engine and fan drive.

Slip-resistant Plates

Spiked plates on working areas provide slip-resistant performance.

Horn Interconnected with Warning Light (optional)

gives visual and audible notice of the excavator's operation when activated.



Rear View Monitoring System (optional)

The operator can view the rear of the machine with a color monitor screen.



OPG Top Guard (optional)

OPG top guard Level 2 (ISO 10262) capable with optional bolt-on top guard.

Large LCD Color Monitor

Large Multi-lingual LCD Monitor

A large user-friendly color monitor enables safe, accurate and smooth work. Improved screen visibility is achieved by the use of LCD that can easily be read at various angles and lighting conditions. The switches are simple and easy to operate. Function keys facilitate multi-function operations. Displays data in 12 languages to support operators around the world.



Indicators

- | | |
|----------------------------------|-----------------------------------|
| 1 Auto-decelerator | 5 Hydraulic oil temperature gauge |
| 2 Working mode | 6 Fuel gauge |
| 3 Travel speed | 7 ECO gauge |
| 4 Engine water temperature gauge | 8 Function switches menu |

Basic operation switches

- | | |
|------------------------------------|---------------------|
| 1 Auto-decelerator (& auto idling) | 4 Buzzer cancel |
| 2 Working mode selector | 5 Wiper |
| 3 Traveling selector | 6 Windshield washer |

Mode Selection

The multi-function color monitor has Power mode (two levels), Economy mode (four levels), and Lifting mode.

Working Mode	Application	Advantage
P (P0,P1)	Power Mode	<ul style="list-style-type: none"> Maximum production/power Fast cycle time
E (E0,E1,E2,E3)	Economy Mode	<ul style="list-style-type: none"> Good cycle time Good fuel economy
L	Lifting Mode	<ul style="list-style-type: none"> Hydraulic pressure is increased 17%.

Equipment Management Monitoring System

Monitor Function

Controller monitors engine oil level, coolant temperature, battery charge and air clogging, etc. If controller finds any abnormality, it is displayed on the LCD.



Maintenance Function

Monitor informs replacement time for oil and filters when the replacement interval is reached.

Trouble Data Memory Function

Monitor stores abnormalities for effective troubleshooting.



MAINTENANCE FEATURES

Easy Checking and Maintenance of Engine

Engine check points are concentrated on one side of the machine to facilitate daily checks. Thermal guards are placed around high-temperature parts such as turbocharger.



Long-life Oil, Filter

Uses high-performance filtering materials and long-life oil. Extends the oil and filter replacement interval.



Hydraulic oil filter

Engine oil & Engine oil filter	every 500 hours
Hydraulic oil	every 5000 hours
Hydraulic oil filter	every 1000 hours

Electric Pump, Grease Gun with Indicator (optional)

Greasing is made easy with the electric pump and grease gun with indicator.



Indicator Grease gun

Wide Catwalk

Easier, safer operator cab access and maintenance checks.



Slip-resistant Plates

Spiked plates provided on top of the machine cab maintains slip-resistant performance for a prolonged period.

Easy Cleaning of Cooling Unit

Reverse-rotation function of the hydraulic driven fan simplifies cleaning out the cooling unit.



Steps Connected to the Machine Cab

Steps allows access from left hand catwalk to top of machine for engine check and maintenance.



Easy Detachable Radiator and Oil Cooler

Engine hood opens fully to facilitate removal and installation of the radiator and oil cooler. The hood can be opened vertically by changing the position of the torsion bar.



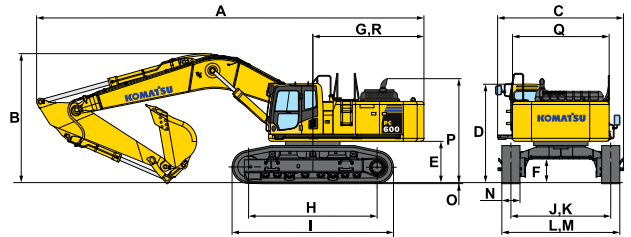
Photo may include optional equipment.



DIMENSIONS

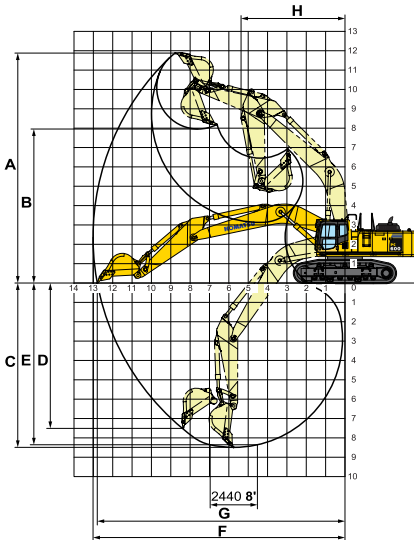
	Boom	7660 mm 25'2"	7660 mm 25'2"	7660 mm 25'2"	7300 mm 23'11"	6600 mm 21'8"
	Arm	3500 mm 11'6"	4300 mm 14'1"	5200 mm 17'1"	3500 mm 11'6"	2900 mm 9'6"
A	Overall length	12960 mm 42'6"	12880 mm 42'3"	12585 mm 41'3"	12590 mm 41'4"	11980 mm 39'4"
B	Overall height (to top of boom)	4300 mm 14'1"	4655 mm 15'3"	5235 mm 17'2"	4280 mm 14'1"	4600 mm 15'1"

		PC600-8R1	PC600LC-8R1
C	Overall width	4210 mm 13'10"	4210 mm 13'10"
D	Overall height (to top of cab)	3290 mm 10'10"	3290 mm 10'10"
E	Ground clearance, counterweight	1365 mm 4'6"	1365 mm 4'6"
F	Ground clearance (minimum)	780 mm 2'7"	780 mm 2'7"
G	Tail swing radius	3950 mm 13'0"	3950 mm 13'0"
H	Track length on ground	4250 mm 13'11"	4600 mm 15'1"
I	Track length	5340 mm 17'6"	5690 mm 18'8"
J	Track gauge	2590 mm 8'6"	2590 mm 8'6"
K	Track gauge when expanded	3300 mm 10'10"	3300 mm 10'10"
L	Width of crawler	3190 mm 10'6"	3190 mm 10'6"
M	Width of crawler when expanded	3900 mm 12'10"	3900 mm 12'10"
N	Shoe width	600 mm 24"	600 mm 24"
O	Grouser height	37 mm 1.5"	37 mm 1.5"
P	Machine cab height	3435 mm 11'3"	3435 mm 11'3"
Q	Machine cab width	3170 mm 10'5"	3170 mm 10'5"
R	Distance, swing center to rear end	3825 mm 12'7"	3825 mm 12'7"



WORKING RANGE

Unit: mm ft in



	PC600/600LC-8R1					
	STD		HD		SE	
	Boom	7660 25'2"	7660 25'2"	7660 25'2"	7300 23'11"	6600 21'8"
	Arm	3500 11'6"	4300 14'1"	5200 17'1"	3500 11'6"	2900 9'6"
A	Max. digging height	11880 39'0"	12180 40'0"	12560 41'3"	11475 37'8"	11140 36'7"
B	Max. dumping height	7960 26'1"	8245 27'1"	8600 28'3"	7650 25'1"	7210 23'8"
C	Max. digging depth	8490 27'10"	9275 30'5"	10225 33'7"	8165 26'9"	7060 23'2"
D	Max. vertical wall digging depth	7510 24'8"	8375 27'6"	9275 30'5"	6660 21'10"	5630 18'6"
E	Max. digging depth of cut for 8' level	8360 27'5"	9175 30'1"	10125 33'3"	8030 26'4"	6910 22'8"
F	Max. digging reach	13020 42'9"	13740 45'1"	14630 48'0"	12615 41'5"	11550 37'11"
G	Max. digging reach at ground level	12800 42'0"	13555 44'6"	14435 47'4"	12385 40'8"	11300 37'1"
H	Min. swing radius	5370 17'7"	5385 17'8"	5510 18'1"	5090 16'8"	4670 15'4"
	Bucket digging force (SAE J 1179)	264 kN 26900 kg 59,300 lb				289 kN 29500 kg 65,040 lb
	Bucket digging force at power max. (SAE J 1179)	285 kN 29100 kg 64,150 lbf				312 kN 31770 kg 70,040 lb
	Arm crowd force (SAE J 1179)	222 kN 22600 kg 49,820 lb	194 kN 19800 kg 43,650 lb	170 kN 17300 kg 38,140 lb	222 kN 22600 kg 49,820 lb	260 kN 26500 kg 58,420 lb
	Arm crowd force at power max (SAE J 1179)	238 kN 24300 kg 53,570 lb	209 kN 21300 kg 46,960 lb	182 kN 18600 kg 41,010 lb	238 kN 24300 kg 53,570 lb	280 kN 28500 kg 62,830 lb
	Bucket digging force (ISO 6015)	294 kN 30000 kg 66,140 lb				336 kN 34300 kg 75,620 lb
	Bucket digging force at power max. (ISO 6015)	317 kN 32300 kg 71,210 lb				362 kN 36900 kg 81,350 lb
	Arm crowd force (ISO 6015)	228 kN 23300 kg 51,370 lb	202 kN 20600 kg 45,410 lb	176 kN 17900 kg 39,460 lb	228 kN 23300 kg 51,370 lb	272 kN 27700 kg 61,070 lb
	Arm crowd force at power max (ISO 6015)	246 kN 25100 kg 55,340 lb	218 kN 22200 kg 48,940 lb	189 kN 19300 kg 42,550 lb	246 kN 25100 kg 55,340 lb	293 kN 29900 kg 65,920 lb



BACKHOE BUCKET AND ARM COMBINATION

BUCKET CAPACITY (HEAPED)				WIDTH			WEIGHT (with side shrouds, side cutters) kg lb	TOOTH	ARM LENGTH m ft in							
SAE, PCSA m ³ yd ³		CECE m ³ yd ³		With side shrouds, side cutters mm in	Without side shrouds, side cutters mm in	Bucket lip width mm in										
use with 7.66m 25'2" boom											3.5	11'6"	4.3	14'1"	5.2	17'1"
2.0	2.62	1.8	2.35	1430	56.3"	1250	49.2"	—	2130	4,700	KMAX	○	○	○		
2.3	3.01	2.0	2.62	1580	62.2"	1400	55.1"	—	2260	4,980	KMAX	○	○	—		
2.7	3.53	2.4	3.14	1780	70.1"	1600	63.0"	—	2470	5,450	KMAX	○	—	—		
use with 7.3m 23'11" HD boom											3.5 11'6" HD arm					
2.8	3.66	2.5	3.27	1725	68.0"	1655	65.2"	1920	75.6"	6,830	KMAX	○	○	○		
3.1	4.05	2.8	3.66	1850	72.9"	1780	70.1"	2040	80.3"	7,120	KMAX	○	○*	○		
use with 6.6m 21'8" SE boom											2.9 9'6" SE arm					
3.5	4.58	3.1	4.05	1950	76.8"	1900	74.9"	2110	83.1"	7,340	KMAX	○	○	○		

These charts are based on over-side stability with fully loaded bucket at maximum reach.

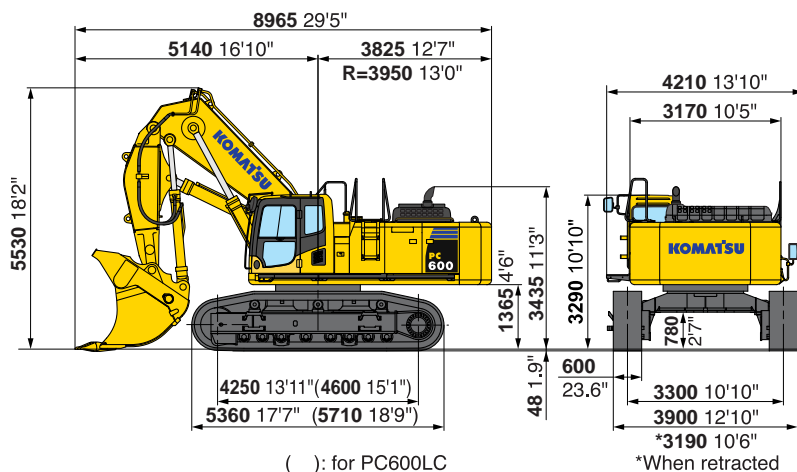
○ : General purpose use, density up to 1.8 t/m³ 3,000 lb/yd³

— : Not useable

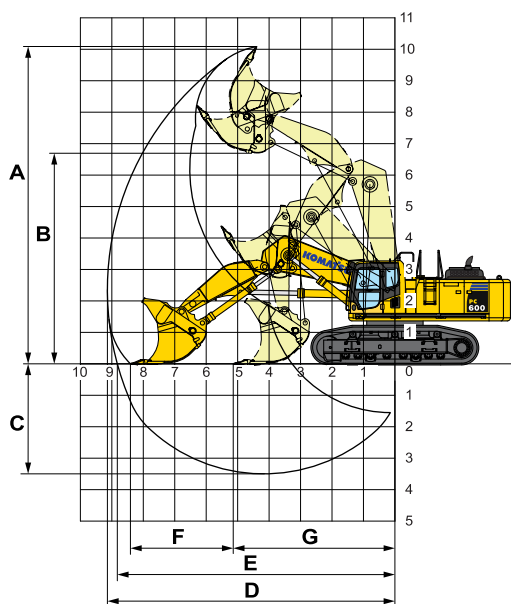
* : Available only to LC crawler



LOADING SHOVEL DIMENSIONS



LOADING SHOVEL WORKING RANGE AND BUCKET SELECTION



Working Range

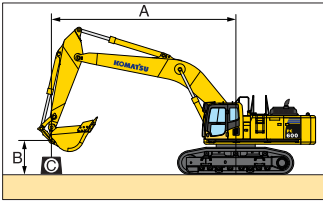
Type of bucket	Bottom dump	
Capacity—heaped	4.0 m ³	5.2 yd ³
A Max. cutting height	10090 mm	33'1"
B Max. dumping height	6705 mm	22'0"
C Max. digging depth	3495 mm	11'6"
D Max. digging reach	9190 mm	30'2"
E Max. digging reach at ground level	8850 mm	29'0"
F Level crowding distance	3275 mm	10'9"
G Min. crowd distance	5135 mm	16'10"
Bucket digging force	386 kN	39400 kg 86,860 lb
Arm crowd force	338 kN	34500 kg 76,060 lb

Bucket Selection

Type of bucket	Bottom dump	
Capacity—heaped	4.0 m ³	5.2 yd ³
Width	2090 mm	82.3"
Weight	5700 kg	12,570 lb
No. of bucket teeth	6	
Recommended uses	General-purpose digging and loading	



LIFTING CAPACITY



PC600-8R1

- A: Reach from swing center
- B: Bucket hook height
- C: Lifting capacity
- Cf: Rating over front
- Cs: Rating over side
- ☉: Rating at maximum reach

Boom : 7.66m 25'2", Arm : 3.5m 11'6", Bucket : 2.7m³ 3.53cu.yd, Shoes : 600mm 24" triple, L mode: "OFF"

unit: kg lb

B	☉ MAX		9.1m 29'		7.6m 24'		6.1m 20'		4.6m 15'		3.0m 9'	
	Cf	Cs	Cf	Cs	Cf	Cs	Cf	Cs	Cf	Cs	Cf	Cs
9.1m 29'	*6950 *15,300	*6950 *15,300										
7.6m 24'	*6750 *14,900	*6750 *14,900	*9400 *20,700	*9400 *20,700								
6.1m 20'	*6850 *15,100	*6850 *15,100	*9700 *21,400	*9700 *21,400	*10800 *23,800	*10800 *23,800						
4.6m 15'	*7100 *15,600	6500 14,300	*10400 *22,900	9450 20,800	*12100 *26,700	*12100 *26,700	*15000 *33,100	*15000 *33,100	*20100 *44,300	*20100 *44,300		
3.0m 9'	*7600 *16,700	6050 13,400	*11250 *24,800	8950 19,800	*13600 *30,000	12250 27,000	*17850 *39,300	17400 38,400				
1.5m 4'	7950 17,600	5900 13,100	11350 25,000	8550 18,900	*14800 *32,600	11600 25,600	*19650 *43,300	16450 36,300	*14500 *32,000	*14500 *32,000		
0m 0'	8100 17,900	6000 13,300	11050 24,400	8300 18,300	14850 32,800	11150 24,600	*20200 *44,500	15850 34,900	*16850 *37,100	*16850 *37,100		
-1.5m -4'	8650 19,100	6400 14,100	10850 24,000	8100 17,900	14600 32,200	10900 24,000	*20000 *44,100	15550 34,300	*16550 *36,500	*16550 *36,500	*11950 *26,400	*11950 *26,400
-3.0m -9'	9700 21,400	7200 15,900	10850 24,000	8100 17,900	14550 32,100	10850 23,900	*18950 *41,700	15600 34,400	*24500 *54,000	*24500 *54,000	*14350 *31,600	*14350 *31,600
-4.6m -15'	*10150 *22,400	8900 19,700			*12950 *28,500	11050 24,400	*16650 *36,700	*15900 *35,000	*21150 *46,600	*21150 *46,600	*24800 *54,700	*24800 *54,700
-6.1m -20'	*9500 *21,000	*9500 *21,000			*8550 *18,800	*8550 *18,800	*12800 *28,200	*12800 *28,200	*16300 *35,900	*16300 *35,900		

Boom : 7.66m 25'2", Arm : 3.5m 11'6", Bucket : 2.7m³ 3.53cu.yd, Shoes : 600mm 24" triple, L mode: "ON"

unit: kg lb

B	☉ MAX		9.1m 29'		7.6m 24'		6.1m 20'		4.6m 15'		3.0m 9'	
	Cf	Cs	Cf	Cs	Cf	Cs	Cf	Cs	Cf	Cs	Cf	Cs
9.1m 29'	*8550 *18,900	*8550 *18,900										
7.6m 24'	*8350 *18,400	*8350 *18,400	*11850 *26,100	10000 22,100								
6.1m 20'	*8450 *18,600	7200 15,900	*12250 *27,000	9800 21,600	*13500 *29,700	*13500 *29,700						
4.6m 15'	8600 19,000	6500 14,300	12250 27,000	9450 20,800	*15100 *33,300	13000 28,700	*18600 *41,000	*18600 *41,000	*24650 *54,300	*24650 *54,300		
3.0m 9'	8100 17,900	6050 13,400	11750 26,000	8950 19,800	*16000 *35,300	12250 27,000	*22100 *48,700	17550 38,700				
1.5m 4'	7950 17,600	5900 13,100	11350 25,000	8550 18,900	*15350 *33,800	11600 25,600	22050 48,600	16450 36,300	*17400 *38,400	*17400 *38,400		
0m 0'	8100 17,900	6000 13,300	11050 24,400	8300 18,300	14850 32,800	11150 24,600	21350 47,100	15850 34,900	*20150 *44,400	*20150 *44,400		
-1.5m -4'	8650 19,100	6400 14,100	10850 24,000	8100 17,900	14600 32,200	10900 24,000	21050 46,400	15550 34,300	*19950 *44,000	*19950 *44,000	*14450 *31,800	*14450 *31,800
-3.0m -9'	9700 21,400	7200 15,900	10850 24,000	8100 17,900	14550 32,100	10850 23,900	21150 46,600	15600 34,400	*30400 *67,100	25750 56,800	*17400 *38,300	*17400 *38,300
-4.6m -15'	11900 26,200	8900 19,700			14800 32,600	11050 24,400	*20900 *46,100	15900 35,100	*26450 *58,300	*26000 *57,300	*29600 *65,300	*29600 *65,300
-6.1m -20'	*12350 *27,300	*12350 *27,300			*11150 *24,600	*11150 *24,600	*16350 *36,000	*16350 *36,000	*20650 *45,600	*20650 *45,600		

Boom : 7.3m 23'11", Arm : 3.5m 11'6", Bucket : 2.8m³ 3.66cu.yd, Shoes : 600mm 24" triple, L mode: "OFF"

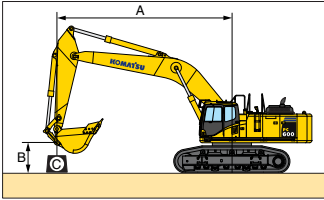
unit: kg lb

B	☉ MAX		9.1m 29'		7.6m 24'		6.1m 20'		4.6m 15'		3.0m 9'	
	Cf	Cs	Cf	Cs	Cf	Cs	Cf	Cs	Cf	Cs	Cf	Cs
9.1m 29'	*6500 *14,300	*6500 *14,300										
7.6m 24'	*6300 *13,900	*6300 *13,900	*8000 *17,600	*8000 *17,600								
6.1m 20'	*6350 *14,000	*6350 *14,000	*9550 *21,000	9400 20,800	*10500 *23,200	*10500 *23,200						
4.6m 15'	*6650 *14,700	*6650 *14,700	*10150 *22,400	9100 20,000	*11750 *25,900	*11750 *25,900	*14500 *32,000	*14500 *32,000	*19900 *43,900	*19900 *43,900		
3.0m 9'	*7200 *15,800	6150 13,600	*11000 *24,200	8650 19,100	*13300 *29,300	12050 26,500	*17350 *38,200	*17350 *38,200	*24100 *53,200	*24100 *53,200		
1.5m 4'	*8000 *17,600	6050 13,300	11050 24,400	8300 18,300	*14500 *32,000	11450 25,200	*19250 *42,500	16500 36,400	*21300 *46,900	*21300 *46,900		
0m 0'	8400 18,500	6150 13,600	10800 23,800	8000 17,700	14700 32,400	11000 24,200	*20000 *44,100	15850 34,900	*14600 *32,100	*14600 *32,100		
-1.5m -4'	9000 19,800	6600 14,600	10650 23,400	7850 17,300	14450 31,800	10750 23,700	*19850 *43,800	15500 34,200	*21100 *46,500	*21100 *46,500	*14000 *30,900	*14000 *30,900
-3.0m -9'	10250 22,600	7600 16,700	10650 23,500	7900 17,400	*14400 *31,700	10700 23,500	*18750 *41,300	15550 34,200	*24750 *54,500	*24750 *54,500	*19650 *43,300	*19650 *43,300
-4.6m -15'	*10350 *22,800	9650 21,300			*12100 *26,700	10900 24,100	*16150 *35,600	*15750 *34,700	*21000 *46,200	*21000 *46,200	*27400 *60,400	*27400 *60,400
-6.1m -20'	*9500 *20,900	*9500 *20,900					*11450 *25,200	*11450 *25,200	*15250 *33,700	*15250 *33,700		

*Load is limited by hydraulic capacity rather than tipping. Ratings are based on SAE J 1097. Rated loads do not exceed 87% of hydraulic lift capacity or 75% of tipping load.



LIFTING CAPACITY



PC600-8R1

- A: Reach from swing center
- B: Bucket hook height
- C: Lifting capacity
- Cf: Rating over front
- Cs: Rating over side
- ☉: Rating at maximum reach

Boom : 7.3m 23'11", Arm : 3.5m 11'6", Bucket : 2.8m³ 3.66cu.yd, Shoes : 600mm 24" triple, L mode: "ON"

unit: kg lb

B	☉ MAX		9.1m 29'		7.6m 24'		6.1m 20'		4.6m 15'		3.0m 9'	
	Cf	Cs	Cf	Cs	Cf	Cs	Cf	Cs	Cf	Cs	Cf	Cs
9.1m 29'	*8150	*8150										
	*17,900	*17,900										
7.6m 24'	*7900	*7900	*9850	9550								
	*17,400	*17,400	*21,700	21,100								
6.1m 20'	*7950	*7450	*12150	9400	*13200	*13200						
	*17,600	*16,500	*26,800	20,800	*29,100	*29,100						
4.6m 15'	*8300	6650	11900	9100	*14800	12750	*18000	*18000	*24400	*24400		
	*18,300	14,700	26,300	20,000	*32,600	28,100	*39,700	*39,700	*53,800	*53,800		
3.0m 9'	8350	6150	11450	8650	15850	12050	*21550	17600	*26500	*26500		
	18,400	13,600	25,300	19,100	34,900	26,500	*47,500	38,800	*58,400	*58,400		
1.5m 4'	8200	6050	11050	8300	15200	11450	*22150	16500	*23400	*23400		
	18,100	13,300	24,400	18,300	33,500	25,200	*48,900	36,400	*51,600	*51,600		
0m 0'	8400	6150	10800	8000	14700	11000	*21400	15850	*17800	*17800		
	18,500	13,600	23,800	17,700	32,400	24,200	*47,200	34,900	*39,300	*39,300		
-1.5m -4'	9000	6600	10650	7850	14450	10750	21050	15500	*25450	*25450	*16950	*16950
	19,800	14,600	23,400	17,300	31,800	23,700	46,500	34,200	*56,100	*56,100	*37,300	*37,300
-3.0m -9'	10250	7600	10650	7900	14400	10700	21050	15550	*30700	*25800	*23750	*23750
	22,600	16,700	23,500	17,400	31,700	23,500	46,500	34,200	*67,700	56,900	*52,400	*52,400
-4.6m -15'	12950	9650			14650	10900	*20350	15850	*26250	*26100	*33500	*33500
	28,600	21,300			32,300	24,100	*44,900	34,900	*57,900	*57,500	*73,900	*73,900
-6.1m -20'	*12450	*12450					*14750	*14750	*19500	*19500		
	*27,400	*27,400					*32,600	*32,600	*43,000	*43,000		

Boom : 6.6m 21'8", Arm : 2.9m 9'6", Bucket : 3.5m³ 4.58cu.yd, Shoes : 600mm 24" triple, L mode: "OFF"

unit: kg lb

B	☉ MAX		9.1m 29'		7.6m 24'		6.1m 20'		4.6m 15'		3.0m 9'	
	Cf	Cs	Cf	Cs	Cf	Cs	Cf	Cs	Cf	Cs	Cf	Cs
9.1m 29'	*9650	*9650										
	*21,300	*21,300										
7.6m 24'	*9050	*9050			*11550	*11550						
	*20,000	*20,000			*25,500	*25,500						
6.1m 20'	*8950	*8950			*11750	*11750						
	*19,700	*19,700			*25,900	*25,900						
4.6m 15'	*9200	8250	*11250	9000	*12700	*12700	*15450	*15450	*20100	*20100		
	*20,300	18,100	*24,800	19,800	*28,000	*28,000	*34,100	*34,100	*44,400	*44,400		
3.0m 9'	*9800	7600	11500	8650	*14000	12100	*17950	17650	*24650	*24650		
	*21,600	16,700	25,300	19,100	*30,900	26,600	*39,600	38,900	*54,300	*54,300		
1.5m 4'	9950	7400	11150	8350	*15000	11500	*19750	16750	*26900	25900		
	22,000	16,400	24,600	18,400	*33,100	25,400	*43,500	36,900	*59,400	57,100		
0m 0'	10300	7650	10900	8100	14850	11100	*20250	16100	*26150	25000		
	22,700	16,900	24,100	17,900	32,800	24,500	*44,600	35,500	*57,700	55,100		
-1.5m -4'	11250	8400	10850	8050	14650	10900	*19800	15800	*26750	*25950	*18800	*18800
	24,800	18,500	24,000	17,800	32,300	24,100	*43,600	34,900	*58,900	*57,200	*41,500	*41,500
-3.0m -9'	*11500	9950			*13250	11000	*17950	15950	*23750	*23750	*24700	*24700
	*25,400	22,000			*29,200	24,300	*39,600	35,100	*52,400	*52,400	*54,500	*54,500
-4.6m -15'	*10650	*10650					*13500	*13500	*18250	*18250	*23100	*23100
	*23,500	*23,500					*29,800	*29,800	*40,300	*40,300	*50,900	*50,900

Boom : 6.6m 21'8", Arm : 2.9m 9'6", Bucket : 3.5m³ 4.58cu.yd, Shoes : 600mm 24" triple, L mode: "ON"

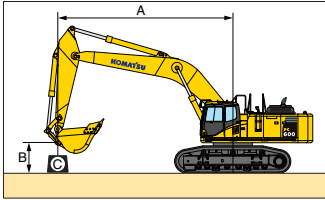
unit: kg lb

B	☉ MAX		9.1m 29'		7.6m 24'		6.1m 20'		4.6m 15'		3.0m 9'	
	Cf	Cs	Cf	Cs	Cf	Cs	Cf	Cs	Cf	Cs	Cf	Cs
9.1m 29'	*11800	*11800										
	*26,000	*26,000										
7.6m 24'	*11100	*11100			*14400	13500						
	*24,400	*24,400			*31,800	29,800						
6.1m 20'	*10950	9400			*14700	13300						
	*24,200	20,700			*32,400	29,300						
4.6m 15'	10900	8250	11800	9000	*15900	12750	*19100	18950	*24600	*24600		
	24,000	18,100	26,100	19,800	*35,100	28,200	*42,100	41,800	*54,300	*54,300		
3.0m 9'	10150	7600	11500	8650	15900	12100	*22250	17750	*30350	28050		
	22,300	16,700	25,300	19,100	35,100	26,600	*49,000	39,200	*66,900	61,800		
1.5m 4'	9950	7400	11150	8350	15300	11500	22450	16750	*26900	25900		
	22,000	16,400	24,600	18,400	33,700	25,400	49,500	36,900	*59,400	57,100		
0m 0'	10300	7650	10900	8100	14850	11100	21700	16100	*26150	25000		
	22,700	16,900	24,100	17,900	32,800	24,500	47,900	35,500	*57,700	55,100		
-1.5m -4'	11250	8400	10850	8050	14650	10900	21400	15800	*33050	26100	*22500	*22500
	24,800	18,500	24,000	17,800	32,300	24,100	47,200	34,900	*72,800	57,600	*49,600	*49,600
-3.0m -9'	13350	9950			14750	11000	21550	15950	*29500	26450	*31000	*31000
	29,400	22,000			32,500	24,300	47,500	35,100	*65,100	58,300	*68,400	*68,400
-4.6m -15'	*13750	*13750					*17200	*16300	*23000	*23000	*29100	*29100
	*30,400	*30,400					*37,900	*36,000	*50,800	*50,800	*64,200	*64,200

*Load is limited by hydraulic capacity rather than tipping. Ratings are based on SAE J 1097. Rated loads do not exceed 87% of hydraulic lift capacity or 75% of tipping load.



LIFTING CAPACITY



PC600LC-8R1

- A: Reach from swing center
- B: Bucket hook height
- C: Lifting capacity
- Cf: Rating over front
- Cs: Rating over side
- ☉: Rating at maximum reach

Boom : 7.66m 25'2", Arm : 3.5m 11'6", Bucket : 2.7m³ 3.53cu.yd, Shoes : 600mm 24" triple, L mode : "OFF" unit: kg lb

B	☉ MAX		9.1m 29'		7.6m 24'		6.1m 20'		4.6m 15'		3.0m 9'	
	Cf	Cs	Cf	Cs	Cf	Cs	Cf	Cs	Cf	Cs	Cf	Cs
9.1m 29'	*6950 *15,300	*6950 *15,300										
7.6m 24'	*6750 *14,900	*6750 *14,900	*9400 *20,700	*9400 *20,700								
6.1m 20'	*6850 *15,100	*6850 *15,100	*9700 *21,400	*9700 *21,400	*10800 *23,800	*10800 *23,800						
4.6m 15'	*7100 *15,600	6650 14,600	*10400 *22,900	9600 21,200	*12100 *26,700	*12100 *26,700	*15000 *33,100	*15000 *33,100	*20100 *44,300	*20100 *44,300		
3.0m 9'	*7600 *16,700	6200 13,700	*11250 *24,800	9150 20,200	*13600 *30,000	*12450 27,500	*17850 *39,300	*17600 *38,900				
1.5m 4'	*8300 *18,400	6050 13,400	*11950 *26,300	8750 19,300	*14800 *32,600	11800 26,100	*19650 *43,300	16750 37,000	*14500 *32,000	*14500 *32,000		
0m 0'	9350 20,600	6150 13,600	*12350 *27,200	8450 18,600	*15400 *34,000	11350 25,100	*20200 *44,500	16150 35,600	*16850 *37,100	*16850 *37,100		
-1.5m -4'	9950 22,000	6550 14,500	*12300 *27,100	8300 18,300	*15450 *34,000	11100 24,500	*20000 *44,100	15850 35,000	*16550 *36,500	*16550 *36,500	*11950 *26,400	*11950 *26,400
-3.0m -9'	*10150 *22,400	7400 16,300	*11600 *25,500	8300 18,300	*14800 *32,600	11100 24,400	*18950 *41,700	15900 35,100	*24500 *54,000	*24500 *54,000	*14350 *31,600	*14350 *31,600
-4.6m -15'	*10150 *22,400	9100 20,100			*12950 *28,500	11300 24,900	*16650 *36,700	*16100 *35,500	*21150 *46,600	*21150 *46,600	*24800 *54,700	*24800 *54,700
-6.1m -20'	*9500 *21,000	*9500 *21,000			*8550 *18,800	*8550 *18,800	*12800 *28,200	*12800 *28,200	*16300 *35,900	*16300 *35,900		

Boom : 7.66m 25'2", Arm : 3.5m 11'6", Bucket : 2.7m³ 3.53cu.yd, Shoes : 600mm 24" triple, L mode : "ON" unit: kg lb

B	☉ MAX		9.1m 29'		7.6m 24'		6.1m 20'		4.6m 15'		3.0m 9'	
	Cf	Cs	Cf	Cs	Cf	Cs	Cf	Cs	Cf	Cs	Cf	Cs
9.1m 29'	*8550 *18,900	*8550 *18,900										
7.6m 24'	*8350 *18,400	*8350 *18,400	*11850 *26,100	10200 22,500								
6.1m 20'	*8450 *18,600	7350 16,200	*12250 *27,000	10000 22,000	*13500 *29,700	*13500 *29,700						
4.6m 15'	*8750 *19,300	6650 14,600	*13100 *28,900	9600 21,200	*15100 *33,300	13250 29,200	*18600 *41,000	*18600 *41,000	*24650 *54,300	*24650 *54,300		
3.0m 9'	9300 20,500	6200 13,700	*13450 29,600	9150 20,200	*17000 *37,500	12450 27,500	*22100 *48,700	17850 39,400				
1.5m 4'	9150 20,200	6050 13,400	13000 28,700	8750 19,300	17600 38,800	11800 26,100	*24350 *53,700	16750 37,000	*17400 *38,400	*17400 *38,400		
0m 0'	9350 20,600	6150 13,600	12700 28,000	8450 18,600	17100 37,700	11350 25,100	24800 54,600	16150 35,600	*20150 *44,400	*20150 *44,400		
-1.5m -4'	9950 22,000	6550 14,500	12500 27,600	8300 18,300	16800 37,000	11100 24,500	24450 54,000	15850 35,000	*19950 *44,000	*19950 *44,000	*14450 *31,800	*14450 *31,800
-3.0m -9'	11150 24,600	7400 16,400	12500 27,600	8300 18,300	16800 37,000	11100 24,400	*23650 *52,100	15900 35,100	*30400 *67,100	26200 57,800	*17400 *38,300	*17400 *38,300
-4.6m -15'	*13000 *28,700	9100 20,100			*16400 *36,100	11300 24,900	*20900 *46,100	16200 35,800	*26450 *58,300	*26450 *58,300	*29600 *65,300	*29600 *65,300
-6.1m -20'	*12350 *27,300	*12350 *27,300			*11150 *24,600	*11150 *24,600	*16350 *36,000	*16350 *36,000	*20650 *45,600	*20650 *45,600		

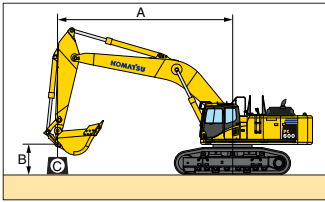
Boom : 7.3m 23'11", Arm : 3.5m 11'6", Bucket : 2.8m³ 3.66cu.yd, Shoes : 600mm 24" triple, L mode : "OFF" unit: kg lb

B	☉ MAX		9.1m 29'		7.6m 24'		6.1m 20'		4.6m 15'		3.0m 9'	
	Cf	Cs	Cf	Cs	Cf	Cs	Cf	Cs	Cf	Cs	Cf	Cs
9.1m 29'	*6500 *14,300	*6500 *14,300										
7.6m 24'	*6300 *13,900	*6300 *13,900	*8000 *17,600	*8000 *17,600								
6.1m 20'	*6350 *14,000	*6350 *14,000	*9550 *21,000	*9550 *21,000	*10500 *23,200	*10500 *23,200						
4.6m 15'	*6650 *14,700	*6650 *14,700	*10150 *22,400	9250 20,400	*11750 *25,900	*11750 *25,900	*14500 *32,000	*14500 *32,000	*19900 *43,900	*19900 *43,900		
3.0m 9'	*7200 *15,800	6300 13,900	*11000 *24,200	8850 19,500	*13300 *29,300	12250 27,000	*17350 *38,200	*17350 *38,200	*24100 *53,200	*24100 *53,200		
1.5m 4'	*8000 *17,600	6150 13,600	*11650 *25,700	8450 18,700	*14500 *32,000	11650 25,700	*19250 *42,500	16800 37,100	*21300 *46,900	*21300 *46,900		
0m 0'	*9200 *20,300	6300 13,900	*12050 *26,600	8200 18,100	*15150 *33,400	11200 24,700	*20000 *44,100	16150 35,600	*14600 *32,100	*14600 *32,100		
-1.5m -4'	*10200 *22,400	6800 14,900	*11900 *26,300	8050 17,700	*15150 *33,400	10950 24,100	*19850 *43,800	15800 34,900	*21100 *46,500	*21100 *46,500	*14000 *30,900	*14000 *30,900
-3.0m -9'	*10350 *22,900	7750 17,100	*10900 *24,100	8050 17,800	*14400 *31,700	10900 24,000	*18750 *41,300	15850 34,900	*24750 *54,500	*24750 *54,500	*19650 *43,300	*19650 *43,300
-4.6m -15'	*10350 *22,800	9850 21,800			*12100 *26,700	11150 24,600	*16150 *35,600	*16050 *35,400	*21000 *46,200	*21000 *46,200	*27400 *60,400	*27400 *60,400
-6.1m -20'	*9500 *20,900	*9500 *20,900					*11450 *25,200	*11450 *25,200	*15250 *33,700	*15250 *33,700		

*Load is limited by hydraulic capacity rather than tipping. Ratings are based on SAE J 1097. Rated loads do not exceed 87% of hydraulic lift capacity or 75% of tipping load.



LIFTING CAPACITY



PC600LC-8R1

- A: Reach from swing center
- B: Bucket hook height
- C: Lifting capacity
- Cf: Rating over front
- Cs: Rating over side
- ☉: Rating at maximum reach

Boom : 7.3m 23'11", Arm : 3.5m 11'6", Bucket : 2.8m³ 3.66cu.yd, Shoes : 600mm 24" triple, L mode: "ON" unit: kg lb

B	A	☉ MAX		9.1m 29'		7.6m 24'		6.1m 20'		4.6m 15'		3.0m 9'	
		Cf	Cs	Cf	Cs	Cf	Cs	Cf	Cs	Cf	Cs	Cf	Cs
9.1m 29'		*8150	*8150										
		*17,900	*17,900										
7.6m 24'		*7900	*7900	*9850	9750								
		*17,400	*17,400	*21,700	21,500								
6.1m 20'		*7950	7650	*12150	9600	*13200	*13200						
		*17,600	16,800	*26,800	21,100	*29,100	*29,100						
4.6m 15'		*8300	6800	*12900	9250	*14800	13000	*18000	*18000	*24400	*24400		
		*18,300	15,000	*28,400	20,400	*32,600	28,600	*39,700	*39,700	*53,800	*53,800		
3.0m 9'		*8900	6300	13150	8850	*16700	12250	*21550	17900	*26500	*26500		
		*19,700	13,900	29,000	19,500	*36,800	27,000	*47,500	39,400	*58,400	*58,400		
1.5m 4'		9450	6150	12750	8450	17450	11650	*23950	16800	*23400	*23400		
		20,900	13,600	28,100	18,700	38,500	25,700	*52,800	37,100	*51,600	*51,600		
0m 0'		9700	6300	12450	8200	16950	11200	24750	16150	*17800	*17800		
		21,400	13,900	27,400	18,100	37,400	24,700	54,600	35,600	*39,300	*39,300		
-1.5m -4'		10400	6800	12300	8050	16700	10950	*24500	15800	*25450	*25450	*16950	*16950
		22,900	14,900	27,100	17,700	36,800	24,100	*54,000	34,900	*56,100	*56,100	*37,300	*37,300
-3.0m -9'		11850	7750	12300	8050	16600	10900	*23450	15850	*30700	*26250	*23750	*23750
		26,100	17,100	27,100	17,800	36,600	24,000	*51,700	34,900	*67,700	57,900	*52,400	*52,400
-4.6m -15'		*13350	9850			*15450	11150	*20350	16150	*26250	*26250	*33500	*33500
		*29,400	21,800			*34,100	24,600	*44,900	35,600	*57,900	*57,900	*73,900	*73,900
-6.1m -20'		*12450	*12450					*14750	*14750	*19500	*19500		
		*27,400	*27,400					*32,600	*32,600	*43,000	*43,000		

Boom : 6.6m 21'8", Arm : 2.9m 9'6", Bucket : 3.5m³ 4.58cu.yd, Shoes : 600mm 24" triple, L mode: "OFF" unit: kg lb

B	A	☉ MAX		9.1m 29'		7.6m 24'		6.1m 20'		4.6m 15'		3.0m 9'	
		Cf	Cs	Cf	Cs	Cf	Cs	Cf	Cs	Cf	Cs	Cf	Cs
9.1m 29'		*9650	*9650										
		*21,300	*21,300										
7.6m 24'		*9050	*9050			*11550	*11550						
		*20,000	*20,000			*25,500	*25,500						
6.1m 20'		*8950	*8950			*11750	*11750						
		*19,700	*19,700			*25,900	*25,900						
4.6m 15'		*9200	8400	*11250	9150	*12700	*12700	*15450	*15450	*20100	*20100		
		*20,300	18,500	*24,800	20,200	*28,000	*28,000	*34,100	*34,100	*44,400	*44,400		
3.0m 9'		*9800	7750	*11750	8850	*14000	12300	*17950	17900	*24650	*24650		
		*21,600	17,100	*25,900	19,500	*30,900	27,100	*39,600	39,500	*54,300	*54,300		
1.5m 4'		*10800	7600	*12150	8500	*15000	11750	*19750	17050	*26900	26350		
		*23,800	16,700	*26,800	18,800	*33,100	25,900	*43,500	37,600	*59,400	58,100		
0m 0'		*11500	7800	*12200	8300	*15500	11350	*20250	16400	*26150	25450		
		*25,400	17,200	*26,900	18,300	*34,000	25,000	*44,600	36,200	*57,700	56,100		
-1.5m -4'		*11600	8550	*11300	8250	*15000	11150	*19800	16100	*26750	*26400	*18800	*18800
		*25,600	18,900	*24,900	18,200	*33,100	24,600	*43,600	35,500	*58,900	*58,200	*41,500	*41,500
-3.0m -9'		*11500	10150			*13250	11250	*17950	16250	*23750	*23750	*24700	*24700
		*25,400	22,400			*29,200	24,800	*39,600	35,800	*52,400	*52,400	*54,500	*54,500
-4.6m -15'		*10650	*10650					*13500	*13500	*18250	*18250	*23100	*23100
		*23,500	*23,500					*29,800	*29,800	*40,300	*40,300	*50,900	*50,900

Boom : 6.6m 21'8", Arm : 2.9m 9'6", Bucket : 3.5m³ 4.58cu.yd, Shoes : 600mm 24" triple, L mode: "ON" unit: kg lb

B	A	☉ MAX		9.1m 29'		7.6m 24'		6.1m 20'		4.6m 15'		3.0m 9'	
		Cf	Cs	Cf	Cs	Cf	Cs	Cf	Cs	Cf	Cs	Cf	Cs
9.1m 29'		*11800	*11800										
		*26,000	*26,000										
7.6m 24'		*11100	*11100			*14400	13700						
		*24,400	*24,400			*31,800	30,300						
6.1m 20'		*10950	9600			*14700	13500						
		*24,200	21,100			*32,400	29,800						
4.6m 15'		*11250	8400	13500	9150	*15900	13000	*19100	*19100	*24650	*24600		
		*24,800	18,500	29,800	20,200	*35,100	28,700	*42,100	*42,100	*54,300	*54,300		
3.0m 9'		11650	7750	13150	8850	*17500	12300	*22250	18050	*30350	28500		
		25,700	17,100	29,000	19,500	*38,600	27,100	*49,000	39,800	*66,900	62,800		
1.5m 4'		11450	7600	12800	8500	17550	11750	*24450	17050	*26900	26350		
		25,300	16,700	28,300	18,800	38,700	25,900	*54,000	37,600	*59,400	58,100		
0m 0'		11850	7800	12550	8300	17150	11350	25100	16400	*26150	25450		
		26,100	17,200	27,700	18,300	37,800	25,000	55,300	36,200	*57,700	56,100		
-1.5m -4'		12950	8550	12500	8250	16900	11150	*24650	16100	*33050	26550	*22500	*22500
		28,600	18,900	27,600	18,200	37,300	24,600	*54,300	35,500	*72,800	58,600	*49,600	*49,600
-3.0m -9'		*14750	10150			*16800	11250	*22450	16250	*29500	26900	*31000	*31000
		*32,500	22,400			*37,000	24,800	*49,500	35,800	*65,100	59,300	*68,400	*68,400
-4.6m -15'		*13750	*13750					*17200	*16600	*23000	*23000	*29100	*29100
		*30,400	*30,400					*37,900	*36,600	*50,800	*50,800	*64,200	*64,200

*Load is limited by hydraulic capacity rather than tipping. Ratings are based on SAE J 1097. Rated loads do not exceed 87% of hydraulic lift capacity or 75% of tipping load.



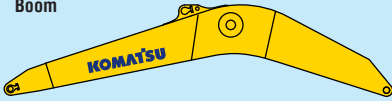
Backhoe

Specs shown include the following equipment:
PC600-8R1 : Boom **7660 mm** 25'2", Arm **3500 mm** 11'6",
Bucket **2.7 m³** 3.53 yd³, Shoes **600 mm** 24" triple grouser

3 Kits Transportation

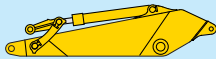
Work equipment assembly (Backhoe)
Weight : **12.5 t** 13.8 U.S.ton

Boom



4.9t : 7920 x 2040 x 1190
5.4U.S.ton : 26'0" x 6'8" x 3'11"

Arm



3.3t : 4870 x 1210 x 650
3.6U.S.ton : 16'0" x 4'0" x 2'2"

Bucket



2.5t : 2150 x 1780 x 1780
2.8U.S.ton : 7'1" x 5'10" x 5'10"

Boom cylinder & Arm cylinder

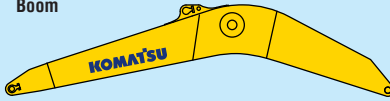


Total **1.7 t** 1.9 U.S.ton

4 Kits Transportation

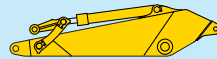
Work equipment assembly (Backhoe)
Weight : **12.5 t** 13.8 U.S.ton

Boom



4.9t : 7920 x 2040 x 1190
5.4U.S.ton : 26'0" x 6'8" x 3'11"

Arm



3.3t : 4870 x 1210 x 650
3.6U.S.ton : 16'0" x 4'0" x 2'2"

Bucket



2.5t : 2150 x 1780 x 1780
2.8U.S.ton : 7'1" x 5'10" x 5'10"

Boom cylinder & Arm cylinder



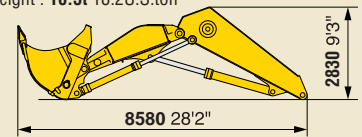
Total **1.7 t** 1.9 U.S.ton

Loading Shovel

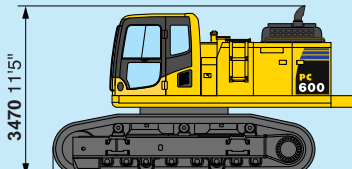
Specs shown include the following equipment:
PC600-8R1 : Boom **4000 mm** 13'1", Arm **3000 mm** 9'10",
Bucket **4.0 m³** 5.2 yd³, Shoes **600 mm** 24" double grouser

3 Kits Transportation

Work equipment assembly (Loading shovel)
Width : **2090** 6'10"
Weight : **16.5t** 18.2U.S.ton



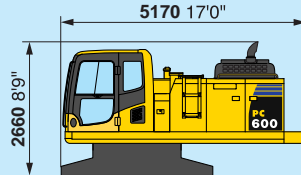
Base machine



PC600-8R1 **6270** 20'7"
PC600LC-8R1 **6440** 21'2"

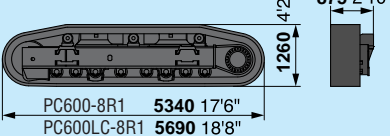
Width : **3195** 10'6"
Weight : PC600-8R1 **34.4t** 37.9U.S.ton
PC600LC-8R1 **35.4t** 39.0U.S.ton

Upper structure



Width : **3170** 10'5"
Weight : **18.4t** 20.3U.S.ton

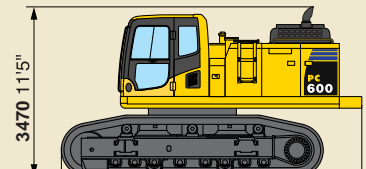
Undercarriage



PC600-8R1 **5340** 17'6"
PC600LC-8R1 **5690** 18'8"

Weight : PC600-8R1 **16.0t** [8.0t x 2] 17.6U.S.ton [8.8U.S.ton x 2]
PC600LC-8R1 **17.0t** [8.5t x 2] 18.7U.S.ton [9.4U.S.ton x 2]

Base machine

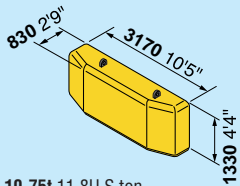


PC600-8R1 **6270** 20'7"
PC600LC-8R1 **6440** 21'2"

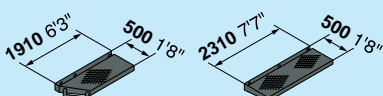
Width : **3195** 10'6"
Weight : PC600-8R1 **34.4t** 37.9U.S.ton
PC600LC-8R1 **35.4t** 39.0U.S.ton

Others

Weight : **12.3t** 13.6U.S.ton

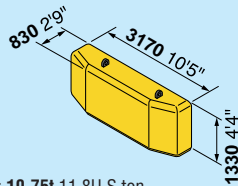


Weight : **10.75t** 11.8U.S.ton

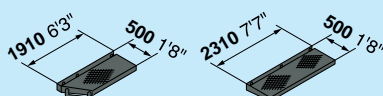


Others

Weight : **12.3t** 13.6U.S.ton

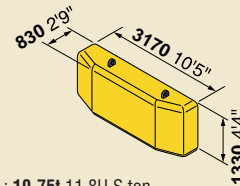


Weight : **10.75t** 11.8U.S.ton

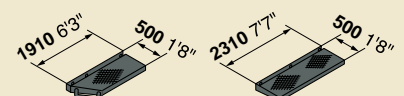


Others

Weight : **12.3t** 13.6U.S.ton



Weight : **10.75t** 11.8U.S.ton





STANDARD EQUIPMENT

ENGINE AND RELATED ITEMS:

- Air cleaner, double element, dry
- Engine, Komatsu SAA6D140E-5
- Variable speed cooling fan, with fan guard

ELECTRICAL SYSTEM:

- Alternator, 24 V/50 A
- Auto decelerator and auto idling system
- Batteries, 2 x 12 V/170 A
- Starting motors, 11kW
- Working lights 2 (boom and right front)

UNDERCARRIAGE:

- Hydraulic track adjusters (each side)
- Sealed track
- 8 track/3 carrier rollers (each side)
- 9 track/3 carrier rollers (each side)(LC)
- **600 mm** 24" triple grouser
- Variable track gauge

GUARDS AND COVERS:

- Dust-proof net for radiator and oil cooler
- Pump/engine room partition cover
- Strengthened revolving frame underguard
- Travel motor guards

OPERATOR ENVIRONMENT:

- Cab with pull-up type front window
- Damper mount, all-weather, sound-suppressed cab with tinted safety glass windows, lockable door, intermittent window wiper and washer, floor mat, cigarette lighter and ashtray
- Multi-function color monitor, fuel control dials, service meter, gauges (coolant temperature, hydraulic oil temperature and fuel level), caution lights (electric charge, engine oil pressure, and air cleaner clogging), indicator lights (engine preheating and swing lock light) level check lights (coolant and engine oil level), self-diagnostic system with trouble data memory
- Seat, fully adjustable with suspension
- Rear view mirror (RH)

HYDRAULIC CONTROLS:

- Control levers and pedals for steering and travel with PPC system
- Control levers, wrist control levers for arm, boom, bucket, and swing with PPC system
- Control valves, 5+4 spools (boom, arm, bucket, swing, and travel)
- Fully hydraulic, with Open-Center Load-Sensing and engine speed sensing (pump and engine mutual control system)
- In-line filter
- Lifting mode system
- Oil cooler
- One axial piston motor per track for travel with counter balance valve
- One gear pump for control circuit
- Power max function
- Two axial piston motors for swing with single-stage relief valve
- Two-mode setting for boom
- Two variable capacity piston pumps

DRIVE AND BRAKE SYSTEM:

- Brakes, hydraulic lock travel brakes, oil disc parking
- Hydrostatic two travel speed system with planetary triple reduction final drive

OTHER STANDARD EQUIPMENT:

- Automatic swing holding brake
- Catwalk
- Counterweight, **10750 kg** 23,700 lb
- Horn, electric
- Large handrails
- Marks and plates, English
- One-touch engine oil drainage
- Paint, Komatsu standard
- PM tune-up service connector
- Rear reflector
- Slip-resistant plates
- Travel alarm
- Water separator



OPTIONAL EQUIPMENT

- Alternator, 24 V/90 A
- Arms (Backhoe):
 - 3500 mm** 11'6" arm assembly
 - 3500 mm** 11'6" HD arm assembly
 - 4300 mm** 14'1" arm assembly
 - 5200 mm** 17'1" arm assembly
 - 2900 mm** 9'6" SE arm assembly
- Automatic air conditioner
- Booms (Backhoe):
 - 7660 mm** 25'2" boom assembly
 - 7300 mm** 23'11" HD boom assembly
 - 6600 mm** 21'8" SE boom assembly
- Cab front guard level 2 (ISO 10262)
- Cab with fixed front window
- Counterweight **13500kg** 29,800 lb
- Electric pump, grease gun with indicator
- 12V electric supply
- Fire extinguisher
- Full length track roller guard
- General tool kit
- Interconnected horn and warning light
- Large-capacity batteries
- Loading shovel attachments
- Lower wiper
- OPG top guard level 2 (ISO 10262)
- Radio AM/FM
- Rain visor
- Rear view mirror (LH)
- Rear view monitoring system
- Rock protectors (undercarridge)
- Seat belt **78 mm** 3", **50 mm** 2"
- Service valve
- Shoes:
 - 600 mm** 24" double grouser for backhoe
 - 750 mm** 29.5" triple grouser for backhoe
 - 900 mm** 35.5" triple grouser for PC600LC backhoe only
- Spare parts for first service
- Step light with timer
- Sun visor
- Track frame undercover (center)
- Vandalism protection locks
- Working lights 2 (on cab)

<https://home.komatsu/en/>

Printed in Japan 201801 IP.As

KOMATSU®

CEN00426-03

Materials and specifications are subject to change without notice.
KOMATSU is a trademark of Komatsu Ltd. Japan.