

# KOMATSU

## PC950-11R PC950LC-11R



Photos may include optional equipment.

### Hydraulic excavator

**Engine power**

405 kW / 543 HP @1800 min<sup>-1</sup>

**Operating weight**

PC950-11R: 93900 kg - 97100 kg

PC950LC-11R: 95800 kg - 99100 kg

**Bucket capacity**

4.0 m<sup>3</sup> - 6.0 m<sup>3</sup>

# PC950/950LC-11R

**Productivity**  
(P+ mode)

**48% UP**



**Fuel efficiency**  
(P+ mode)

**42% UP**



\*Compared with PC850-8E0 (P mode)





# Significantly higher productivity

## Powerful workability and fuel economy

- Significantly improved productivity **Upgrade**
- Three selectable work modes for high productivity or fuel efficiency **New**
- High power SAA6D140E-7 engine **New**
- Larger cooling core for improved cooling performance **Upgrade**
- New hydraulic system **New**

## Improved durability

- Boom and arm resist bending and torsion **Upgrade**
- Clogging sensor for the hydraulic oil filter **New**

## Further enhanced safety

- Lock lever auto lock function **New**
- Tie-offs **New**
- Engine shutdown secondary switch **New**
- LED light as standard equipment **New**

## ICT

- Large high resolution Liquid Crystal Display (LCD) monitor **New**
- KomVision as a standard feature **New**

## Maintenance

- Walk-through catwalks **New**
- Easy-to-retrieve electric grease gun
- Easier cleaning of the oil cooler, air-conditioner condenser, and fuel cooler **New**
- Sealed engine cooling system **New**
- Long-life filter **Upgrade**



Engine power

**405 kW / 543 HP @1800 min<sup>-1</sup>**

Operating weight

**93900 kg - 99100 kg**

Bucket capacity

**4.0 m<sup>3</sup> - 6.0 m<sup>3</sup>**

## Powerful workability and fuel economy

### Abundant number of work modes and settings that can be selected to suit the task and purpose

- Significantly improved productivity Upgrade

The boosted engine output, greater bucket capacity, and new P+ mode for large productivity have resulted in a significantly higher productivity. The electronically controlled closed loop swing circuit system has also improved multiple operability.

#### Productivity VS. PC850-8E0 P mode

In P+ mode for HD spec. **48% UP**

In P+ mode for SE spec. **64% UP**

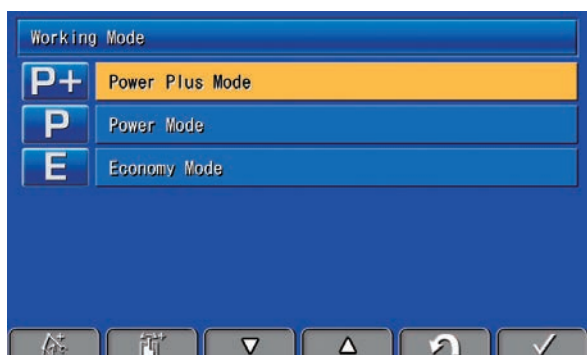
#### Standard bucket capacity

HD spec. **4.0 m<sup>3</sup>**

SE spec. **6.0 m<sup>3</sup>**

- Three selectable work modes for high productivity or fuel efficiency New

In addition to the conventional P mode and E mode, the newly added P+ mode allows the selection of three work modes with just one touch of the monitor switch.



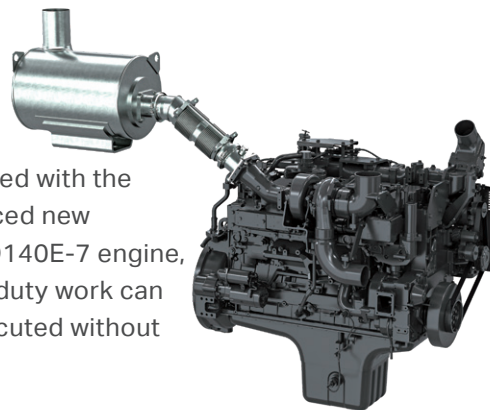
#### Fuel efficiency VS. PC850-8E0 P mode

In P+ mode for HD spec. **42% UP**

In P+ mode for SE spec. **54% UP**

### Its powerful and smooth operation increases work efficiency

- High power SAA6D140E-7 engine New



Equipped with the enhanced new SAA6D140E-7 engine, heavy duty work can be executed without stress.

#### Engine horsepower (Net) VS. PC850-8E0

363 kW → **401 kW** **10% UP**

- Large digging force

The high-output engine and high-efficiency hydraulic system enable powerful digging.

#### Maximum arm crowd force (ISO 6015)

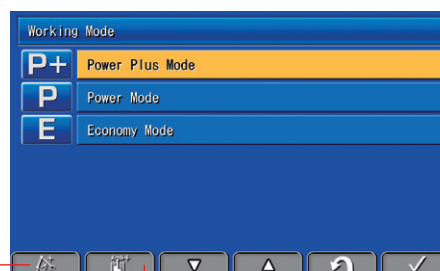
**310 kN (31600 kgf)**

#### Maximum bucket digging force (ISO 6015)

**403 kN (41100 kgf)**

- Boom rise priority mode & swing priority mode

With the monitor switch, you can select the priority order of boom raising and turning operations. So you can adjust the operation balance to best suit the loading work conditions.

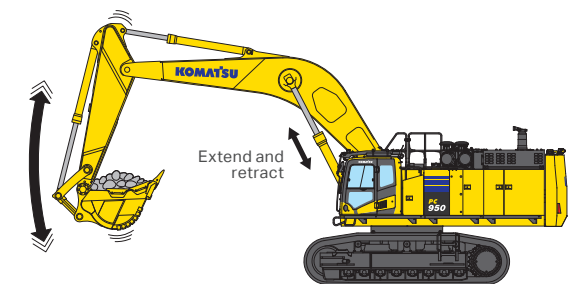


Boom rise priority mode      Swing priority mode



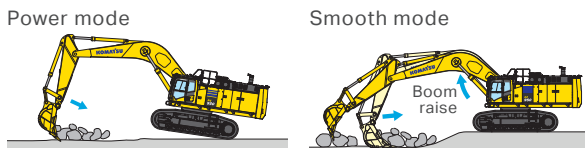
## Shockless boom control

The PC950/950LC-11R boom circuit features a shockless valve to automatically reduce the amount of shaking when operating the boom. Operator fatigue is reduced (which can improve safety and productivity), and spillage caused by shaking is minimized.



## Two-mode setting for boom

Smooth mode provides easy operation for gathering blasted rock and scraping operations. When maximum digging force is needed, switch to Power mode for more effective excavating.



## Ensures both productivity performance and fuel efficiency Upgrade

In P mode, the productivity can be increased while maintaining the same fuel consumption as that of conventional machines. While in E mode, the machine can operate with a greater productivity but lower fuel consumption than conventional machines.

**In P mode** (Compared with PC850-8E0 P mode)

Productivity **39% UP**

Fuel consumption **2% DOWN**

**In E mode** (Compared with PC850-8E0 P mode)

Productivity **25% UP**

Fuel consumption **12% DOWN**

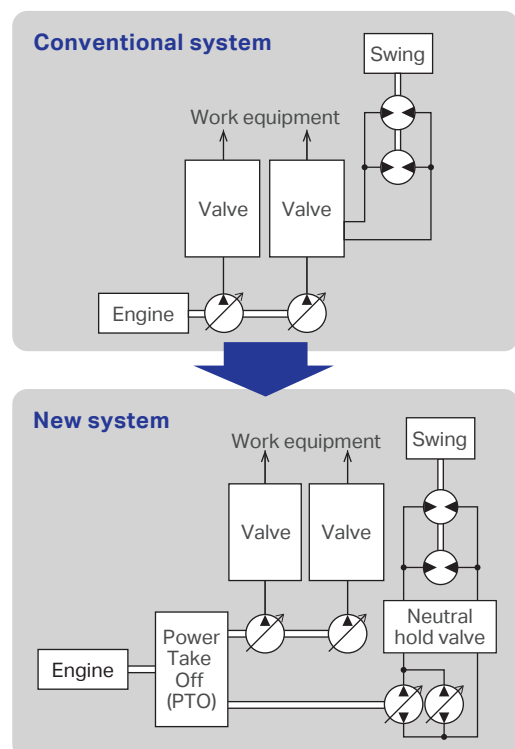
## Improved cooling performance Upgrade

The layout of the cooling core has been optimized, and the core has been enlarged. The cooling performance has also been improved by adopting a new shroud shape.



## New hydraulic system New

An electronically controlled closed loop swing circuit system has been adopted. Independent control of the swing and work equipment circuits enables finely tuned loading operations, thus contributing to reduced fuel consumption and improved workability.

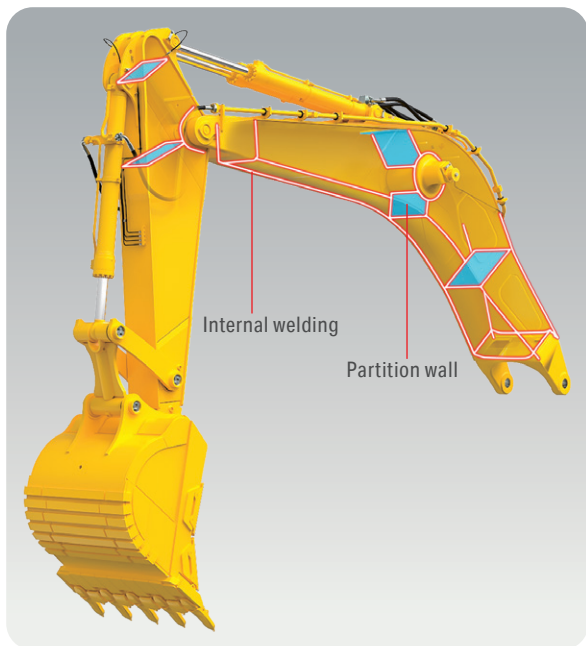


## Improved durability

### Strengthened boom and arm

- Boom and arm resist bending and torsion (HD spec.) **Upgrade**

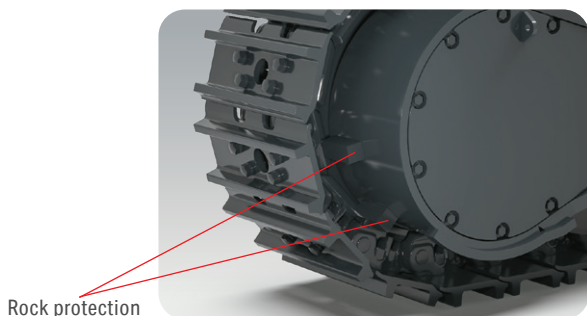
The large cross-sectional structure uses high-tensile steel, thick plates, and partition wall to provide a tough design that resists bending and torsion. Partition wall and internal welding have been added at high load points on the boom, and the welding shape of the arm bosses has been optimized to extend its service life. This hydraulic excavator retains high durability and reliability over the long term, even in hard quarrying operations.



- Reinforced undercarriage

The undercarriage is strengthened to provide excellent reliability and durability when working on rocky ground and blasted rock, etc.

Rock protection shield the travel motors and pipings against damage from rocks.



- Cooling core reinforcement

An exceptionally reliable cooling core with a proven track record in mining equipment is used. The durability of the core has been improved to extend its service life.

### Trouble-resistant electrical circuits

The electrical circuitry is equipped with shielded connectors that resist sagging and poor connections that may result from vibration, as well as waterproof seals that prevent water and dust from entering the connectors. In addition, a circuit breaker is provided to prevent electrical fires caused by short circuits. In the event of a fire, the hydraulic excavator can be restarted by resetting the circuit breaker switch. In addition, highly reliable heat-resistant covered wires are used around high-temperature parts, such as the engine, and in other important locations.

### High-pressure in-line filtration

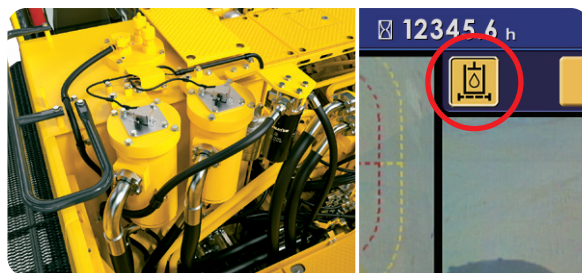
The PC950/950LC-11R has the most extensive filtration system available, providing inline filters as standard equipment.

An in-line filter in the outlet port of each main hydraulic pump reduces failures caused by contamination.

- Return oil filter clog detection function **New**

Recommends filter exchange and prevents catastrophic damage of hydraulic system by informing operator the clogging of hydraulic return filter.

The signal can be monitored via the KOMTRAX Plus.





## Comfortable working space



### Comfortable working space

- Wide spacious cab **New**

The spacious cab with wide field of view offers comfortable working experience even at extended hours.

The ergonomic reclining high-back air suspension seat with a heater function has deep side support for excellent holdability and has easy to adjust height and frontrear inclination. Combined with the seat mounted console, the seat has a wide range of adjustment to obtain the optimum working position.

- Low cab noise

The newly-designed cab is highly rigid and has excellent sound insulation ability.

- Arm rest with simple height adjustment function **New**

The addition of a knob and a plunger to the armrest permits the height of the armrest to be easily adjusted without the use of tools.



- Multifunction audio (Optional) **New**

It has functions of AM/FM radio and Bluetooth® wireless technology enabled products can be connected.



\* Please contact your local distributor.

- Automatic air conditioner (A/C) **New**

- Adoption of levers with reduced operating force

The newly designed PPC valve reduces the lever operation force, thus enabling comfortable work with less fatigue, even after long hours of operation. A short lever is also available as an option.

### Standard equipment :



Sliding window glass (left side)



Sun shield



USB port for charging **New**

Remote intermittent wiper with windshield washer

Defroster (Conform to the ISO 10263-5)

Cigarette lighter

Magazine box & cup holder

## Further enhanced safety

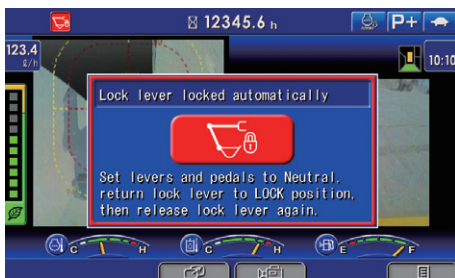
### Operator's cab

PC950/950LC-11R cab satisfies the requirements of OPG top guard level 1 (ISO 10262) for falling objects.

With the installation of a retractable seatbelt, these features securely protect the operator from falling objects.

### Lock lever auto lock function New

If the work equipment lever is not in the neutral position when the hydraulic lock lever is released, the equipment is automatically stopped. The lock lever auto lock state is shown on the monitor screen.



### Tie-offs New

Preventing accidental falls during repairs.



### Safety equipment

#### • Engine shutdown secondary switch New

Engine shutdown secondary switch at base of seat to shutdown the engine.



#### • Fall prevention handrail (ISO 2867) New

Easy and safe access all over the machine for inspection and maintenance.



#### • Retractable seat belt

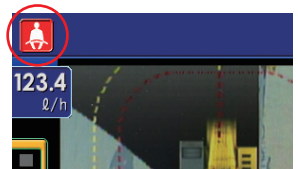
#### • Lock lever

When lock lever is placed in lock position all hydraulic controls (travel, swing, boom, arm, bucket and attachment) are inoperable.



#### • Seat belt caution indicator New

Reminds the operator to fasten the seat belt.



- Emergency escape hammer
- Large side mirrors
- Slip-resistant plates
- Pump/engine room partition
- Travel alarm



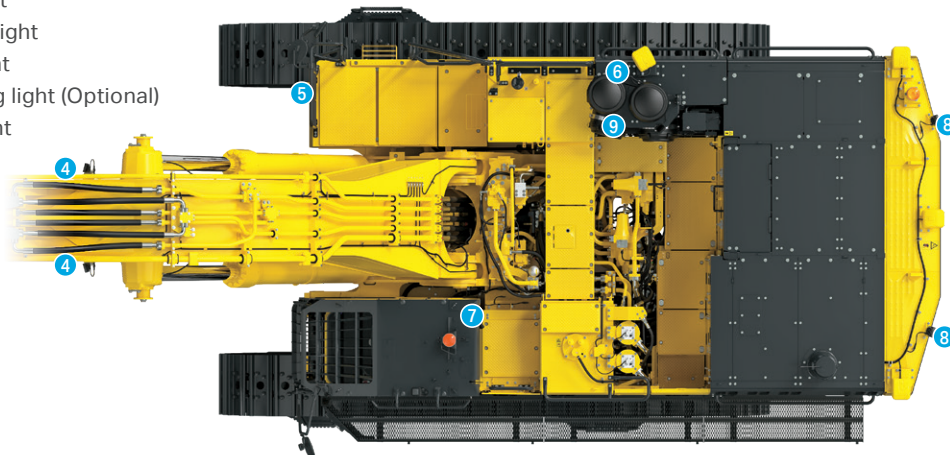
## LED light as standard equipment

**New**

The bright and long life LED light is equipped as standard. Improves visibility in low-light environment ensuring work safety. In addition, the upper left and lower left of the cab have flashlights.

## LED light installation location

- ① Front light above cab  
(LH: Interconnected horn and flashing light )
- ② Front light below cab  
(LH: Interconnected horn and flashing light )
- ③ Step light
- ④ Boom working light (RH, LH)
- ⑤ RH front light
- ⑥ RH working light
- ⑦ Cab rear light
- ⑧ Rear working light (Optional)
- ⑨ Walkway light





## ICT

### Machine monitor with evolutionary interface New

The monitor screen features a high quality, high resolution LCD panel. Switches are simple and easy-to-use. Function switches make multi-functional operations easy. The high visibility screen has been re-designed so the required information is easier to see and understand, without loss of conventional operability. The main screen can display the surroundings clearly using standard KomVision. Main screen displays of images and/or data can be displayed together or separately easily by pressing F3 key.



#### Indicators

- |                            |                                     |
|----------------------------|-------------------------------------|
| 1 Auto-decelerator         | 9 ECO gauge                         |
| 2 Working mode             | 10 Engine coolant temperature gauge |
| 3 Travel speed             | 11 Hydraulic oil temperature gauge  |
| 4 Fuel consumption gauge   | 12 Fuel gauge                       |
| 5 Camera display           | 13 Guidance icon                    |
| 6 Service meter            | 14 Function switches                |
| 7 Camera direction display |                                     |
| 8 Clock                    |                                     |

#### Basic operation switches

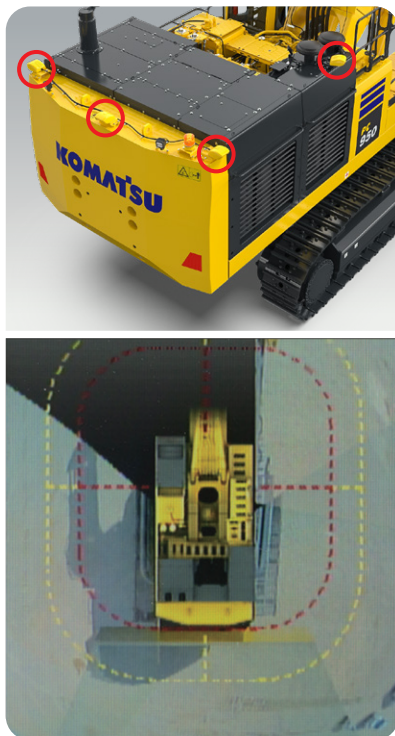
- |                         |                 |
|-------------------------|-----------------|
| 1 Auto-decelerator      | 4 Buzzer cancel |
| 2 Working mode selector | 5 Wiper         |
| 3 Travel speed selector | 6 Window washer |





### KomVision New

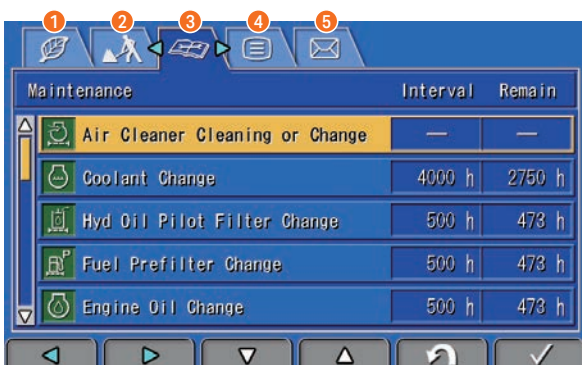
The surroundings of the machine can be displayed on the monitor by using 4 cameras installed at the sides and rear of the machine. Press the switch F4 to toggle between the right, left and rear side view of the machine.



KomVision monitor display

### Visual user menu New

Pressing the F6 key on the main screen displays the user menu screen. The menus are grouped for each function, and use easy-to-understand icons which enable the machine to be operated intuitively.



- 1 Energy saving guidance
- 2 Machine setting
- 3 Maintenance
- 4 Monitor setting
- 5 Mail check

### Support efficiency improvement

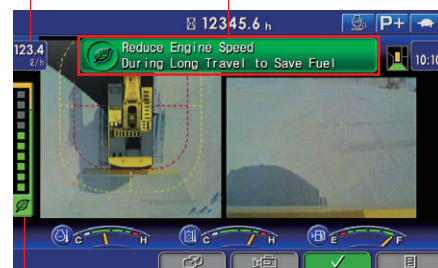
#### • ECO guidance

While machine is operating, ECO guidance operation tips pops up on the monitor guiding the operator to achieve better fuel efficiency.

#### • ECO gauge & fuel consumption gauge

The monitor screen includes an ECO gauge and also a fuel consumption gauge which is continuously displayed. In addition, the operator can set any desired target value of fuel consumption (within the range of the green display), enabling the machine to be operated with better fuel economy.

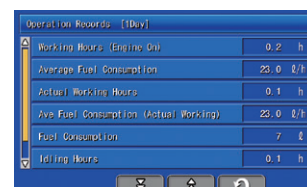
Fuel consumption gauge    ECO guidance



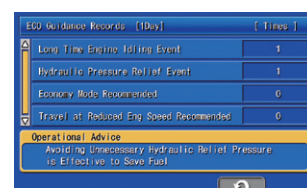
ECO gauge

### Operation record, fuel consumption history, and ECO guidance record

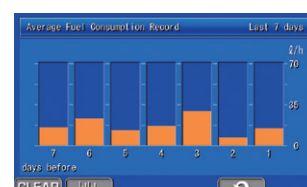
The ECO guidance menu enables the operator to check the operation record, fuel consumption history and ECO guidance record from the ECO guidance menu, using a single touch, thus enabling the total fuel consumption to be reduced.



Operation records



ECO guidance records



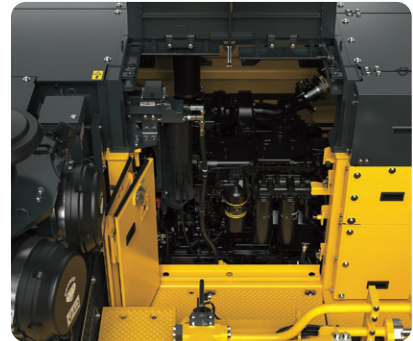
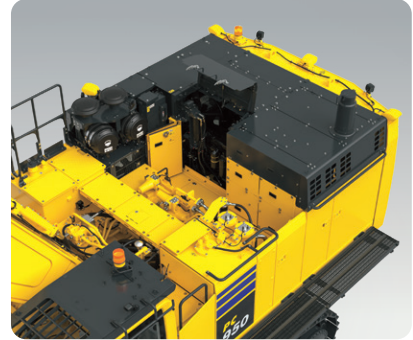
Average fuel consumption logs

## Maintenance

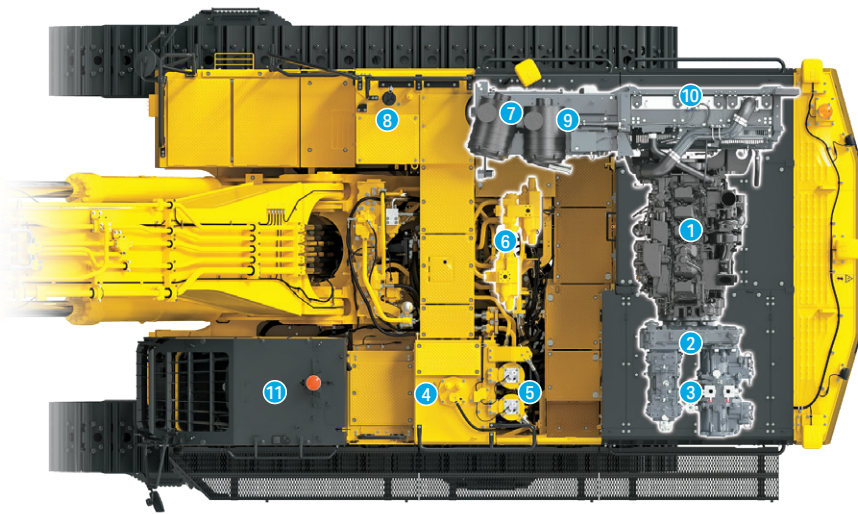
### Equipped with walk-through and catwalks for safe and easy maintenance New

Maintenance points are centrally located, and walk-throughs are provided for easy access.

The front engine door also opens wide for easy access to auxiliary equipment. A catwalk is provided as optional on the right side of this hydraulic excavator, enabling safe inspections of the cooling area.



RH catwalk (Optional)



- |                        |               |
|------------------------|---------------|
| 1 Engine               | 7 Air cleaner |
| 2 PTO                  | 8 Fuel tank   |
| 3 Hydraulic pump       | 9 Oil cooler  |
| 4 Hydraulic oil tank   | 10 Radiator   |
| 5 Hydraulic oil filter | 11 Cab        |
| 6 Control valve        |               |

- Electric pump, grease gun with indicator  
Greasing is made easy with the electric pump.



- Take out the electric grease gun on the ground  
You can grease the work equipment easily with electric grease gun which you can take out on ground.



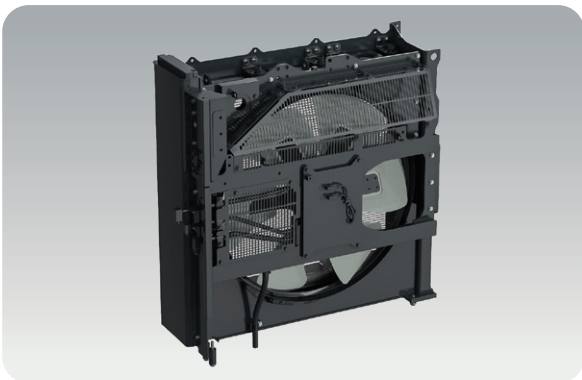


- Easier cleaning of the oil cooler, air-conditioner condenser, and fuel cooler **New**

The hinged air-conditioner condenser and fuel cooler allow easy access to each core part for easy cleaning.



- Easy cleaning of cooling unit  
Reverse-rotation function of the hydraulic driven fan facilitates cleaning of the cooling unit.



- Sealed engine cooling system **New**  
Not only has the cooling system efficiency been improved, it can also operate maintenance-free until the cooling water is replaced.



PC950/950LC-11R : 25 L

PC800/850-8E0 : 9 L×2

- Alternator, compressor belt auto tensioner **New**
- Electric priming pump **New**
- Battery disconnect switch

- Maintenance-free battery **New**  
The high-performance battery eliminates the inconvenience of having to top up the battery fluid.

- Extended replacement interval of hydraulic oil filter **Upgrade**  
The replacement interval of the hydraulic oil filter element is extended by 2.5 times. it contributes to reduction of maintenance cost.

1000 hours → **2500 hours**

- "Maintenance time caution lamp" display  
When the remaining time to maintenance becomes less than 30 hours\*, the maintenance time monitor appears. Pressing the F6 key switches the monitor to the maintenance screen.

\* The setting can be changed within the range between 10 and 200 hours.



Maintenance	Interval	Remain
Air Cleaner Cleaning or Change	—	—
Coolant Change	4000 h	2750 h
Hyd Oil Pilot Filter Change	500 h	473 h
Fuel Prefilter Change	500 h	473 h
Engine Oil Change	500 h	473 h

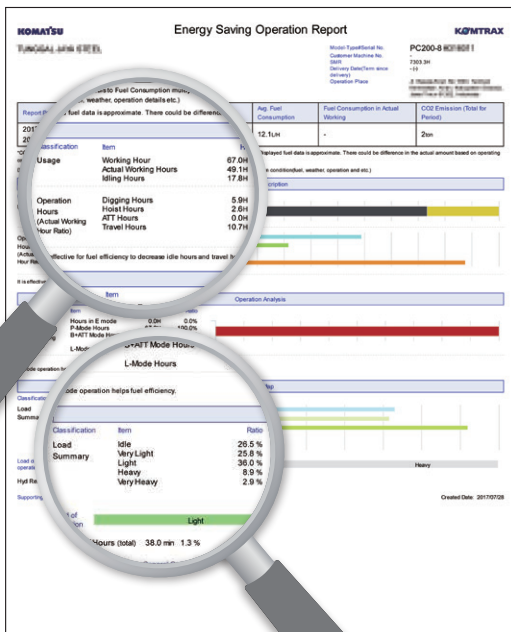
Maintenance screen



The Komatsu remote monitoring and management technology provides insightful data about your equipment and fleet in user-friendly format.

## Energy saving operation report

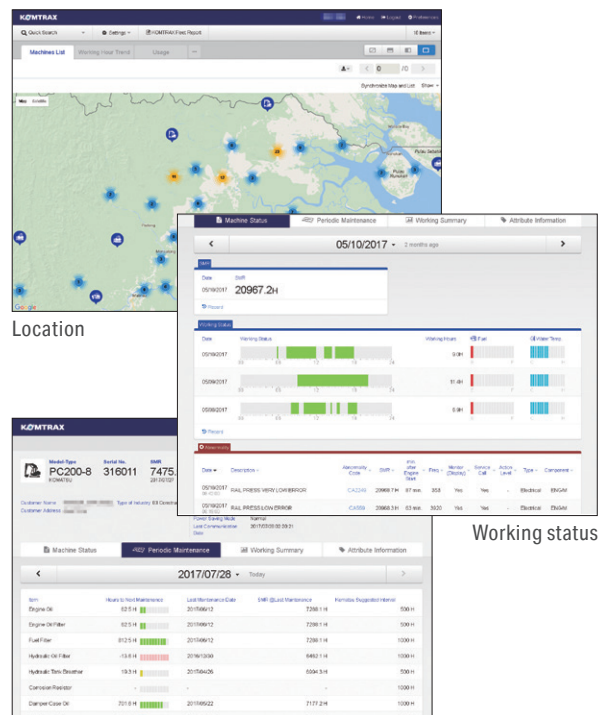
KOMTRAX delivers the energy-saving operation report based on the operating information such as fuel consumption, load summary and idling time, which helps you efficiently run a business.



This report image is an example of hydraulic excavator

## Equipment management support

Through the web application, a variety of search parameters are available to quickly find information about specific machines based on key factors. Moreover, KOMTRAX finds out machines with problems from your fleet and shows you through an optimal interface.



The report contents and data depend on the machine model.

## Optimal strategy for efficient work

The detailed information that KOMTRAX puts at your fingertips helps you manage your fleet conveniently on the web anytime, anywhere. It gives you the power to make better daily and long-term strategic decisions.



## Transportation

### Large production machine designed for easy transportation between jobsite locations

Machine design allows for low transportation height and reduces transportation costs. Less disassembly required to meet transportation weight requirements. Removing bucket (3900 - 4000 kg), arm (5100 - 5300 kg) and counterweight (12800 kg) reduces transportation weight down to under 70307 kg. (Actual weight may vary with different work equipment and attachments).

### Variable track gauge

The track gauge can be adjusted from 3350 mm to 3530 mm for 900 mm shoes and from 3170 mm to 3530 mm for 650 mm and



750 mm shoes to provide narrow trailer loading capabilities or increased machine stability.

## Support

### Komatsu total support

Komatsu Distributor is ready to provide variety of support before and after procuring machine to keep customers machine available and minimize operation cost.

### Fleet recommendation

Komatsu Distributor can study customer job site and provide the most optimum fleet recommendation with detailed information to meet all of your application needs when you are considering to buy new machines or to replace the existing ones from Komatsu.

### Product support

Komatsu Distributor secure the quality of machine by offering quality repair and maintenance services to the customer using Komatsu developed programs.

- Preventive Maintenance (PM) Clinic
- Komatsu Oil and Wear Analysis (KOWA)
- Undercarriage inspection service, etc.

### Genuine parts and genuine oil

Komatsu Distributor will promptly and smoothly offer genuine parts and genuine oil guaranteed quality to various jobsites. Genuine oil is developed by Komatsu so that it is best matched for our Komatsu engines and hydraulic components. It maximizes engine and hydraulic components performance and prolong life.

### Service contract

Komatsu Distributor offers several service package of repair and maintenance for a contracted period with optimum cost. Customer can be "worry-free" by trusting Komatsu Distributor skilled service.

### Extended warranty

Extended warranty with several options available. Komatsu guarantee skilled repair with genuine parts and protection from unexpected expenses.

### Operator training

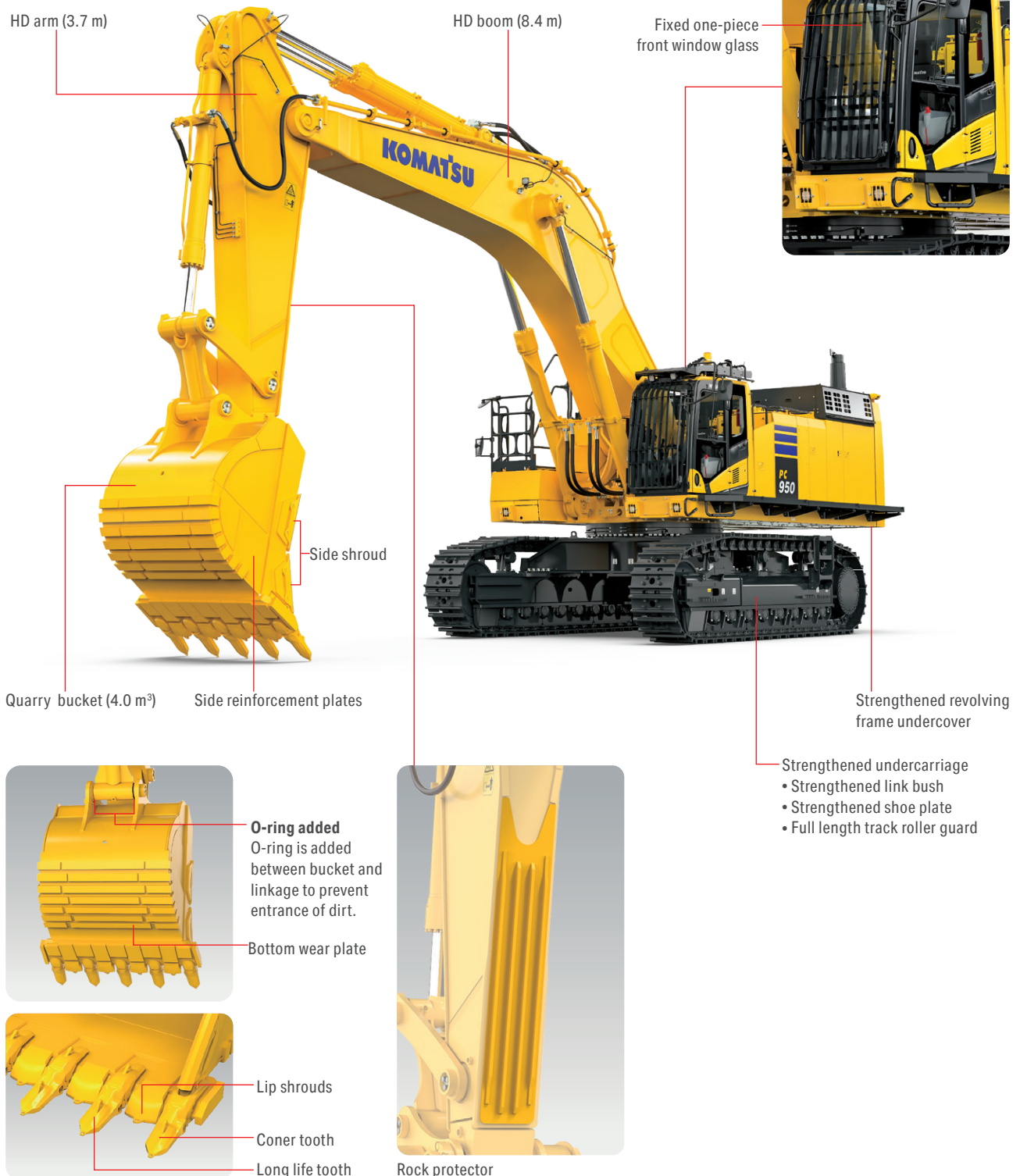
Komatsu Distributor can provide excellent operator training which enables them to operate machine safely & efficiently and to maintain machine properly.



## Introduction of specifications

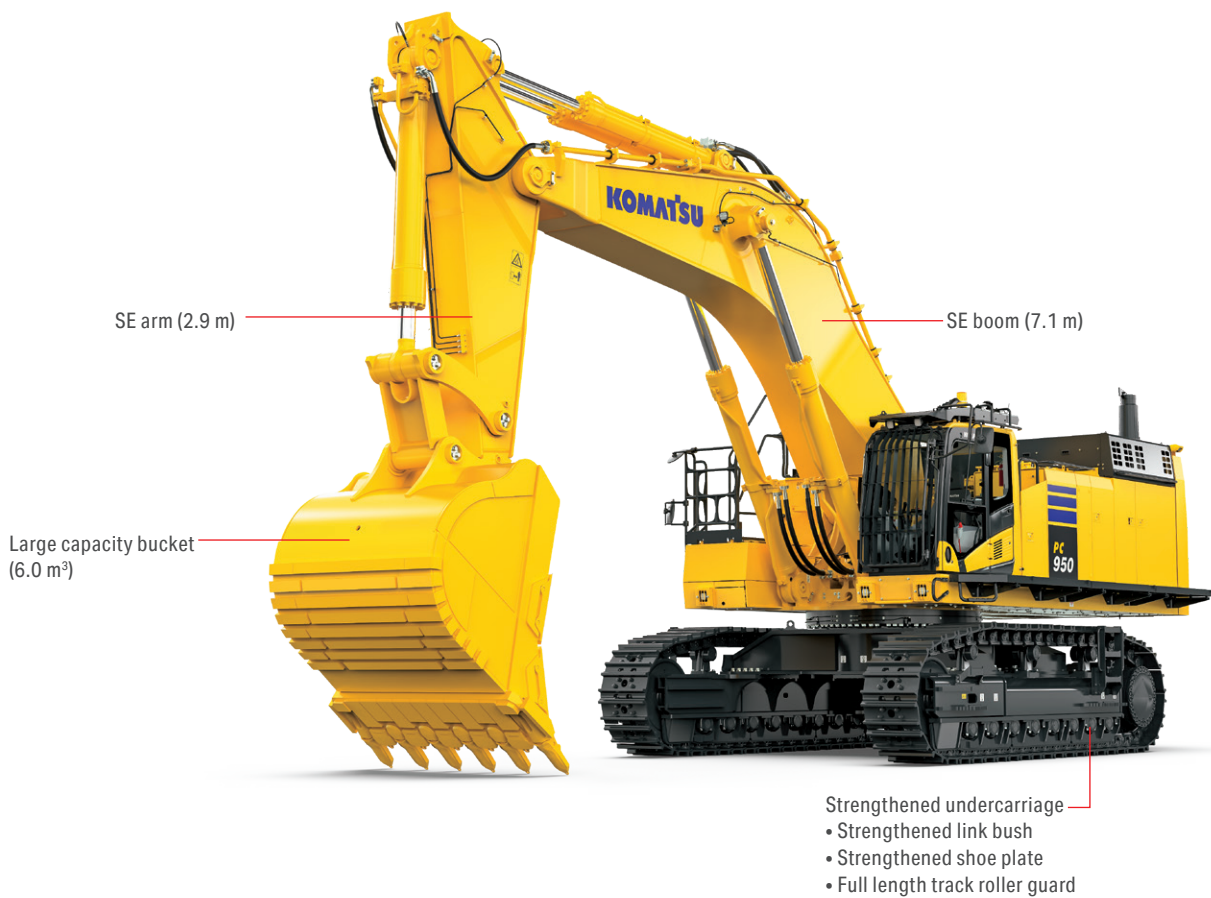
### PC950/950LC-11R Heavy Duty (HD) spec.

Each part of the excavator and body is forged and reinforced. These heavy-duty specifications are designed to demonstrate the excavator's power in hard workplaces, such as quarry and mine sites.



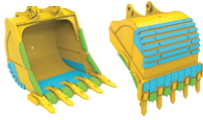
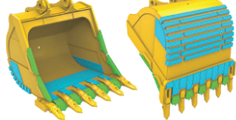
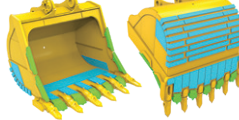



## PC950/950LC-11R SE spec.

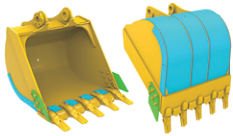
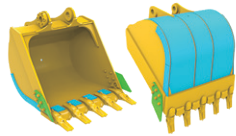


The large capacity bucket and short boom are designed for loading work at quarry sites or other sites requiring large productivity.



## Bucket lineup

### PC950/950LC-11R HD spec. / SE spec.

	Heavy duty bucket	SE bucket	Large SE bucket
Bucket shape			
Wear plate location			
<div style="display: flex; align-items: center;"> <div style="width: 15px; height: 10px; background-color: #90EE90; border: 1px solid black; margin-right: 5px;"></div> Side shroud, side cutter         </div> <div style="display: flex; align-items: center;"> <div style="width: 15px; height: 10px; background-color: #ADD8E6; border: 1px solid black; margin-right: 5px;"></div> Wear plate         </div>			
Bucket capacity*1	4.0 m <sup>3</sup>	6.0 m <sup>3</sup>	6.5 m <sup>3</sup>
Lip shape	Straight	Straight	Spade
Bucket width (With shroud /Max.width*2)	1970 mm / 2230 mm	2230 mm / 2490 mm	2470 mm / 2720 mm
Bucket weight	4580 kg	6000 kg	6430 kg
Tooth type	Kprime (Horizontal pin: Hammerless)	Kprime (Horizontal pin: Hammerless)	Kprime (Horizontal pin: Hammerless)
Number of teeth	5	6	6
Side cutter	No	No	No
Side shroud	Yes	Yes	Yes
Backlash adjustment	Yes	Yes	Yes
8.4 m HD boom 3.7 m HD arm	○	×	×
7.1 m SE boom 2.9 m SE arm	×	○	△
Excavating condition and material	Heavy duty	General-purpose, Heavy duty	General-purpose, Heavy duty

	General purpose bucket	Narrow bucket
Bucket shape		
Wear plate location		
<div style="display: flex; align-items: center;"> <div style="width: 15px; height: 10px; background-color: #90EE90; border: 1px solid black; margin-right: 5px;"></div> Side shroud, side cutter         </div> <div style="display: flex; align-items: center;"> <div style="width: 15px; height: 10px; background-color: #ADD8E6; border: 1px solid black; margin-right: 5px;"></div> Wear plate         </div>		
Bucket capacity*1	4.9 m <sup>3</sup>	4.6 m <sup>3</sup>
Lip shape	Straight	Straight
Bucket width (Including side cutter, shroud)	2335 mm	2225 mm
Bucket weight	4050 kg	3880 kg
Tooth type	Kprime (Horizontal pin: Hammerless)	Kprime (Horizontal pin: Hammerless)
Number of teeth	5	5
Side cutter	Yes	Yes
Side shroud	No	No
Backlash adjustment	Yes	Yes
8.4 m HD boom 3.7 m HD arm	△	△
7.1 m SE boom 2.9 m SE arm	×	×
Excavating condition and material	General-purpose	General-purpose

\*1 The recommended material density for each bucket is listed below. Using the bucket above the recommended material density may result to decreased machine durability. \*2 Lip of the bucket is the maximum width.

○: Material density up to 1.8 t/m<sup>3</sup> △: Material density up to 1.5 t/m<sup>3</sup> and easy digging such as well blasted material or loose soils. ×: Not applicable

### Kprime tooth

#### Safety enhancements

- Intuitive locking system
- Low torque pin for easy tooth changes
- Pin push-out function for removal has been added to improve workability.

#### Reliability

- Improved stability through tighter fit design of tooth to adapter
- New pin structure improves the durability of the locking mechanism and allows for repeated use.

#### Productivity

- 10% - 15% increased usable wear material
- Designed to stay sharp for the life of the tooth
- Wear indicator tells you when to replace pins

#### Kprime tooth installation



\* To remove fastener, use the correct size socket to rotate the pin locking shaft 90° counter-clockwise. Making sure click sound to finish the removal.



## Standard and optional equipment

### Engine

Alternator & A/C compressor auto-tensioner	●
Automatic engine warm-up system	●
Dry type air cleaner, double element	●
Engine, Komatsu SAA6D140E-7	●
Fuel pre-filter with water separator	●
Variable speed cooling fan, hydraulic drive, reversible	●

### Electrical system

Alternator, 24 V/90 A	●
Auto-decelerator and auto idle shutdown	●
Batteries, 2 x 12 V/196 Ah (Maintenance free batteries)	●
Battery disconnect switch	●
Circuit breaker	●
Horn, electric	●
Starting motor, 24 V/11 kW	●
Working LED light (2 boom, 4 cab, 2 right front) *Two LEDs on the cab are linked to the horn and serve as flashlights.	●
Rear LED light (2 counterweight)	○
Maintenance LED light (1 cab, 1 foward of engine)	●
Step light with timer	●

### Hydraulic system

3-mode system (P+, P, E)	●
In-line high pressure filters	●
Proportional Pressure Control (PPC) hydraulic control system	●
Two-mode setting for boom	●
Shockless control system for boom	●

### Guards and covers

Fan guard structure	●
Strengthened revolving frame underguard	●
Cab guards, bolt-on top guard, OPG Level 2 (ISO 10262)	○
Cab guards, full front guard, OPG Level 2 (ISO 10262)	○

### Undercarriage

Hydraulic track adjusters (Each side)	●
650 mm double grouser shoes	○
750 mm double grouser shoes	○
900 mm double grouser shoes	○

### Operator environment

A/C with defroster	●
Cab with fixed front window	●
Engine shutdown secondary switch	●
High-back suspension seat, heated	●
Large high resolution LCD monitor	●
Lock lever	●
Operator protective top guard (OPG), level 1 (ISO 10262)	●
Mirrors (RH, LH)	●
KomVision	●
Seat belt, retractable, 78 mm	●
Washable cab floor mat	●
Multifunction audio	○
Short lever	○
Rain visor	○
Lower wiper	○
beacon lamp	○

### Work equipment

3700 mm HD arm assembly	○
2945 mm SE arm assembly	○
8400 mm HD boom assembly	○
7100 mm SE boom assembly	○

### Other equipment

Equipment Management Monitoring System	●
Grease gun, electric pump type	●
Hand rails & guard	●
KOMTRAX	●
Preventive Maintenance (PM) tune-up service connector	●
Rear reflector	●
Slip-resistant plates	●
Travel alarm	●
Wide catwalk (LH)	●
Wide catwalk (RH)	○
Fuel quick charge preparation	○
Quick oil sampling	○

Further equipment on request ●: Standard equipment ○: Optional equipment

## Specifications

### Engine

Model	Komatsu SAA6D140E-7
Type	4-cycle, water-cooled, direct injection
Aspiration	Turbocharged, aftercooled
Number of cylinders	6
Bore	140 mm
Stroke	165 mm
Piston displacement	15.24 L
Governor	All-speed, electronic
Horsepower:	
SAE J 1995	Gross 405 kW / 543 HP
ISO 14396	405 kW / 543 HP
ISO 9249 / SAE J1349*	Net 401 kW / 538 HP
Rated rpm	1800 min <sup>-1</sup>
Fan drive type	Hydraulic

\* Net horsepower at the maximum speed of radiator cooling fan is 383 kW 513 HP.  
U.S. EPA Tier 2 emissions equivalent.

### Hydraulic system

Type	Open-center load-sensing system
Number of selectable working modes	3
Main pump:	
Type	Variable-capacity piston pumps
Pumps for	Boom, arm, bucket and travel circuits
Maximum flow	1206 L/min
Fan drive pump	Variable capacity piston type
Hydraulic motors:	
Travel	2 x axial piston motor with parking brake
Swing	2 x axial piston motor with swing holding brake
Relief valve setting:	
Implement circuits	34.3 MPa 350 kgf/cm <sup>2</sup>
Travel circuit	34.3 MPa 350 kgf/cm <sup>2</sup>
Swing circuit	27.0 MPa 275 kgf/cm <sup>2</sup>
Pilot circuit	2.9 MPa 30 kgf/cm <sup>2</sup>
Hydraulic cylinders (number of cylinders – bore x stroke x rod diameter):	
Boom	2 – 210 mm x 2083 mm x 150 mm
Arm (HD)	2 – 170 mm x 1936 mm x 120 mm
(SE)	2 – 185 mm x 1671 mm x 120 mm
Bucket (HD)	1 – 185 mm x 1893 mm x 130 mm
(SE)	1 – 225 mm x 1658 mm x 160 mm

### Swing system

Driven method	Hydraulic motors
Swing reduction	Planetary gear
Swing circle lubrication	Grease-bathed
Swing lock	Oil disc brake
Swing speed	6.8 min <sup>-1</sup>

### Drives and brakes

Steering control	Two levers with pedals
Drive method	Fully hydrostatic
Travel motor	Axial piston motor, in-shoe design
Reduction system	Planetary gear triple reduction
Maximum drawbar pull	670 kN 68300 kgf
Gradeability	70%
Maximum travel speed (Lo / Hi)	2.7 / 4.0 km/h
Service brake	Hydraulic lock
Parking brake	Oil disc brake

### Undercarriage

Center frame	H-leg frame
Track frame	Box-section
Seal of track	Sealed
Track adjuster	Hydraulic
Number of shoes (each side)	
PC950-11R	48
PC950LC-11R	52
Number of carrier rollers (each side)	3
Number of track rollers (each side)	
PC950-11R	8
PC950LC-11R	9

### Coolant and lubricant capacity (refilling)

Fuel tank	1045 L
Radiator	82 L
Engine	57 L
Final drive (each side)	21.5 L
Swing drive	25 L x 2
Hydraulic tank	540 L

## Operating weight (approximate)

### PC950/950LC-11R HD spec.:

Operating weight, including 8400 mm boom, 3700 mm arm, heaped 4.0 m<sup>3</sup> backhoe bucket, operator, lubricant, coolant, full fuel tank, and the standard equipment

Shoes	PC950-11R HD spec.		PC950LC-11R HD spec.	
	Operating weight	Ground pressure	Operating weight	Ground pressure
650 mm	93900 kg	139 kPa 1.42 kgf/cm <sup>2</sup>	95800 kg	129 kPa 1.31 kgf/cm <sup>2</sup>
750 mm	94600 kg	121 kPa 1.24 kgf/cm <sup>2</sup>	96600 kg	112 kPa 1.15 kgf/cm <sup>2</sup>
900 mm	95600 kg	102 kPa 1.04 kgf/cm <sup>2</sup>	97700 kg	95 kPa 0.97 kgf/cm <sup>2</sup>

### PC950/950LC-11R SE spec.:

Operating weight, including 7100 mm boom, 2945 mm arm, heaped 6.0 m<sup>3</sup> backhoe bucket, operator, lubricant, coolant, full fuel tank, and the standard equipment

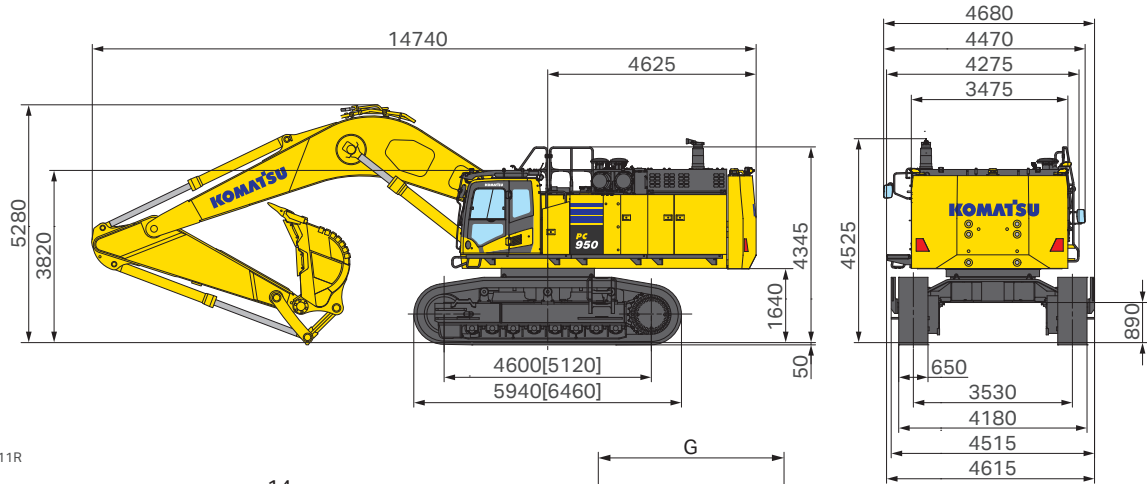
Shoes	PC950-11R SE spec.		PC950LC-11R SE spec.	
	Operating weight	Ground pressure	Operating weight	Ground pressure
650 mm	95300 kg	141 kPa 1.44 kgf/cm <sup>2</sup>	97200 kg	131 kPa 1.33 kgf/cm <sup>2</sup>
750 mm	96000 kg	123 kPa 1.26 kgf/cm <sup>2</sup>	98000 kg	114 kPa 1.16 kgf/cm <sup>2</sup>
900 mm	97100 kg	104 kPa 1.06 kgf/cm <sup>2</sup>	99100 kg	96 kPa 0.98 kgf/cm <sup>2</sup>



# PC950/950LC-11R

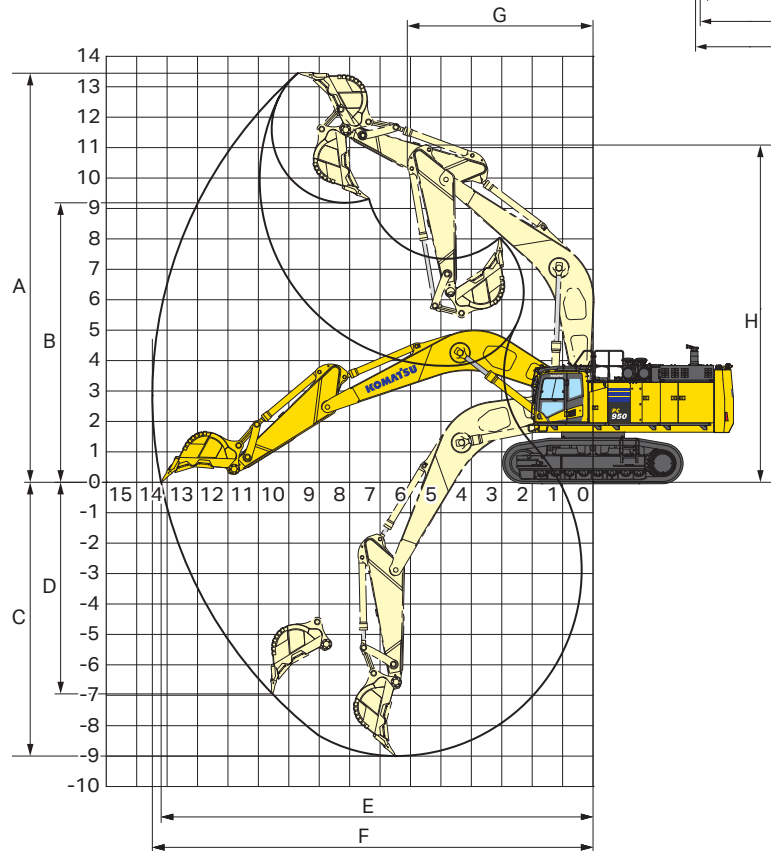
## Dimensions / Working range

### PC950/950LC-11R HD spec.



Unit: mm

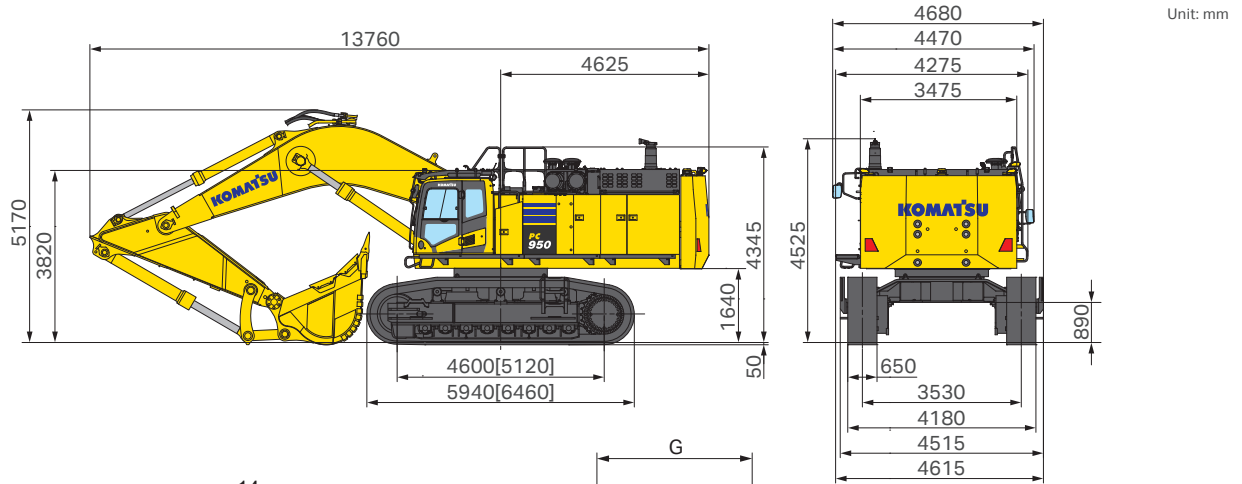
[ ] is PC950LC-11R



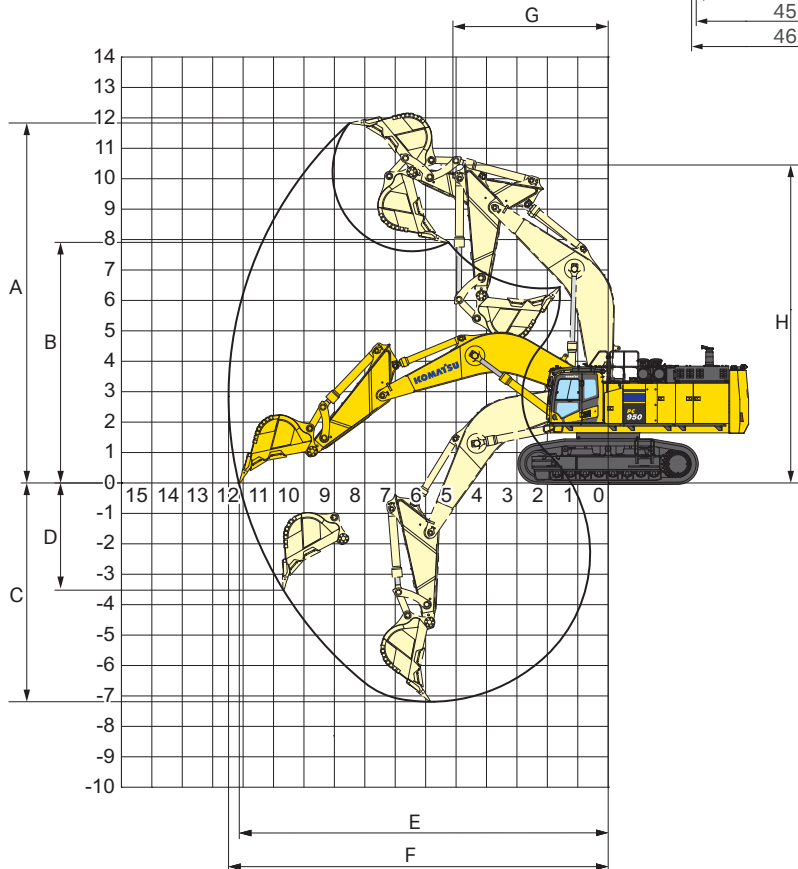
### PC950/950LC-11R HD spec.

Boom	HD boom 8.4 m
Arm	HD arm 3.7 m
Bucket capacity	4.0 m <sup>3</sup>
A Max. digging height	13445 mm
B Max. dumping height	9185 mm
C Max. digging depth	8995 mm
D Max. vertical wall digging depth	6960 mm
E Max. digging reach at ground level	14195 mm
F Max. digging reach	14485 mm
G Min. swing radius	6105 mm
H Min. swing radius height	11085 mm
Arm crowd force (ISO 6015)	310 kN (31600 kgf)
Bucket digging force (ISO 6015)	403 kN (41100 kgf)

## PC950/950LC-11R SE spec.



[ ] is PC950LC-11R



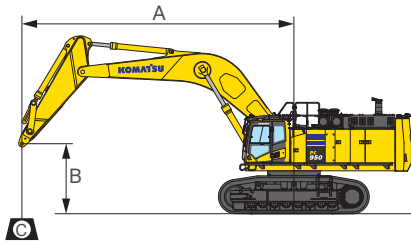
## PC950/950LC-11R SE spec.

Boom	SE boom 7.1 m
Arm	SE arm 2.9 m
Bucket capacity	6.0 m <sup>3</sup>
A Max. digging height	11825 mm
B Max. dumping height	7615 mm
C Max. digging depth	7190 mm
D Max. vertical wall digging depth	3530 mm
E Max. digging reach at ground level	12140 mm
F Max. digging reach	12480 mm
G Min. swing radius	5145 mm
H Min. swing radius height	10475 mm
Arm crowd force (ISO 6015)	385 kN (39300 kgf)
Bucket digging force (ISO 6015)	502 kN (51200 kgf)



# PC950/950LC-11R

## Lifting capacity



- A: Reach from swing center
- B: Arm top pin height
- C: Lifting capacity
- Cf: Rating over front
- Cs: Rating over side
- ⊗: Rating at maximum reach

**PC950-11R HD spec.** Boom: 8400 mm Arm: 3700 mm Without bucket Shoe: 650 mm triple grouser

A	⊗ MAX		10.5 m		9.0 m		7.5 m		6.0 m		4.5 m		3.0 m	
	Cf	Cs	Cf	Cs	Cf	Cs	Cf	Cs	Cf	Cs	Cf	Cs	Cf	Cs
7.5 m	*10900 kg	*10900 kg	*16650 kg	16000 kg	*19050 kg	*19050 kg								
6.0 m	*10900 kg	*10900 kg	*18150 kg	15650 kg	*20200 kg	20150 kg	*23400 kg	*23400 kg	*28800 kg	*28800 kg				
4.5 m	*11150 kg	*11150 kg	*18800 kg	15150 kg	*21500 kg	19250 kg	*25700 kg	25300 kg	*33150 kg	*33150 kg				
3.0 m	*11600 kg	*11600 kg	18850 kg	14600 kg	*22650 kg	18400 kg	*27650 kg	23900 kg	*33900 kg	32650 kg				
1.5 m	*12400 kg	11600 kg	18350 kg	14150 kg	23000 kg	17700 kg	*28800 kg	22850 kg	*28600 kg	*28600 kg				
0 m	*13550 kg	11850 kg	18050 kg	13850 kg	22500 kg	17200 kg	*28900 kg	22200 kg	*33450 kg	30800 kg				
-1.5 m	*15350 kg	12550 kg	17900 kg	13700 kg	22250 kg	16950 kg	*27950 kg	21950 kg	*34600 kg	30700 kg	*22450 kg	*22450 kg		
-3.0 m	*16650 kg	13850 kg	*16650 kg	13850 kg	*21200 kg	17000 kg	*25900 kg	22000 kg	*31600 kg	30900 kg	*34700 kg	*34700 kg	*24800 kg	*24800 kg
-4.5 m	*15800 kg	*15800 kg			*17650 kg	17350 kg	*22300 kg	*22300 kg	*27050 kg	*27050 kg	*31950 kg	*31950 kg		
-6.0 m	*13750 kg	*13750 kg					*15900 kg	*15900 kg	*20150 kg	*20150 kg	*23250 kg	*23250 kg		

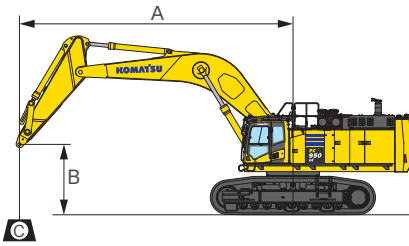
**PC950-11R HD spec.** Boom: 8400 mm Arm: 3700 mm Without bucket Shoe: 750 mm triple grouser

A	⊗ MAX		10.5 m		9.0 m		7.5 m		6.0 m		4.5 m		3.0 m	
	Cf	Cs	Cf	Cs	Cf	Cs	Cf	Cs	Cf	Cs	Cf	Cs	Cf	Cs
7.5 m	*10900 kg	*10900 kg	*16650 kg	16150 kg	*19050 kg	*19050 kg								
6.0 m	*10900 kg	*10900 kg	*18150 kg	15750 kg	*20200 kg	*20200 kg	*23400 kg	*23400 kg	*28800 kg	*28800 kg				
4.5 m	*11150 kg	*11150 kg	*18800 kg	15250 kg	*21500 kg	*19400 kg	*25700 kg	25450 kg	*33150 kg	*33150 kg				
3.0 m	*11600 kg	*11600 kg	19000 kg	14750 kg	*22650 kg	18550 kg	*27600 kg	24050 kg	*33900 kg	32900 kg				
1.5 m	*12400 kg	11700 kg	18500 kg	14300 kg	23200 kg	17850 kg	*28800 kg	23000 kg	*28600 kg	*28600 kg				
0 m	*13550 kg	11950 kg	18200 kg	13950 kg	22700 kg	17350 kg	*28900 kg	22400 kg	*33450 kg	31000 kg				
-1.5 m	*15350 kg	12650 kg	18050 kg	13850 kg	22450 kg	17100 kg	*27950 kg	22150 kg	*34600 kg	30950 kg	*22450 kg	*22450 kg		
-3.0 m	*16650 kg	13950 kg	*16650 kg	14000 kg	*21200 kg	17150 kg	*25900 kg	22200 kg	*31600 kg	31150 kg	*34700 kg	*34700 kg	*24800 kg	*24800 kg
-4.5 m	*15800 kg	*15800 kg			*17650 kg	17500 kg	*22300 kg	*22300 kg	*27050 kg	*27050 kg	*31950 kg	*31950 kg		
-6.0 m	*13750 kg	*13750 kg					*15900 kg	*15900 kg	*20150 kg	*20150 kg	*23250 kg	*23250 kg		

**PC950-11R HD spec.** Boom: 8400 mm Arm: 3700 mm Without bucket Shoe: 900 mm triple grouser

A	⊗ MAX		10.5 m		9.0 m		7.5 m		6.0 m		4.5 m		3.0 m	
	Cf	Cs	Cf	Cs	Cf	Cs	Cf	Cs	Cf	Cs	Cf	Cs	Cf	Cs
7.5 m	*10900 kg	*10900 kg	*16650 kg	16300 kg	*19050 kg	*19050 kg								
6.0 m	*10900 kg	*10900 kg	*18150 kg	15950 kg	*20200 kg	*20200 kg	*23400 kg	*23400 kg	*28800 kg	*28800 kg				
4.5 m	*11150 kg	*11150 kg	*18800 kg	15450 kg	*21500 kg	19600 kg	*25700 kg	*25700 kg	*33150 kg	*33150 kg				
3.0 m	*11600 kg	*11600 kg	19200 kg	14900 kg	*22650 kg	18750 kg	*27650 kg	24350 kg	*33900 kg	33250 kg				
1.5 m	*12400 kg	11850 kg	18750 kg	14450 kg	*23450 kg	18050 kg	*28800 kg	23300 kg	*28600 kg	*28600 kg				
0 m	*13550 kg	12100 kg	18400 kg	14150 kg	23000 kg	17550 kg	*28900 kg	22650 kg	*33450 kg	31400 kg				
-1.5 m	*15350 kg	12800 kg	18250 kg	14000 kg	22750 kg	17300 kg	*27950 kg	22400 kg	*34600 kg	31300 kg	*22450 kg	*22450 kg		
-3.0 m	*16650 kg	14150 kg	*16650 kg	14150 kg	*21200 kg	17350 kg	*25900 kg	22450 kg	*31600 kg	31500 kg	*34700 kg	*34700 kg	*24800 kg	*24800 kg
-4.5 m	*15800 kg	*15800 kg			*17650 kg	*17650 kg	*22300 kg	*22300 kg	*27050 kg	*27050 kg	*31950 kg	*31950 kg		
-6.0 m	*13750 kg	*13750 kg					*15900 kg	*15900 kg	*20150 kg	*20150 kg	*23250 kg	*23250 kg		

\* Load is limited by hydraulic capacity rather than tipping. Ratings are based on ISO 10567. Rated loads do not exceed 87% of hydraulic lift capacity or 75% of tipping load.



A: Reach from swing center  
 B: Arm top pin height  
 C: Lifting capacity

Cf: Rating over front  
 Cs: Rating over side  
 ●: Rating at maximum reach

**PC950LC-11R HD spec.** Boom: 8400 mm Arm: 3700 mm Without bucket Shoe: 650 mm triple grouser

A	● MAX		10.5 m		9.0 m		7.5 m		6.0 m		4.5 m		3.0 m	
	Cf	Cs	Cf	Cs	Cf	Cs	Cf	Cs	Cf	Cs	Cf	Cs	Cf	Cs
7.5 m	*10900 kg	*10900 kg	*16650 kg	16500 kg	*19050 kg	*19050 kg								
6.0 m	*10900 kg	*10900 kg	*18150 kg	16150 kg	*20200 kg	*20200 kg	*23400 kg	*23400 kg	*28800 kg	*28800 kg				
4.5 m	*11150 kg	*11150 kg	*18800 kg	15650 kg	*21500 kg	19850 kg	*25700 kg	*25700 kg	*33150 kg	*33150 kg				
3.0 m	*11600 kg	*11600 kg	*19450 kg	15100 kg	*22650 kg	19000 kg	*27650 kg	24650 kg	*33900 kg	33750 kg				
1.5 m	*12400 kg	12000 kg	*19850 kg	14650 kg	*23450 kg	18300 kg	*28800 kg	23600 kg	*28600 kg	*28600 kg				
0 m	*13550 kg	12300 kg	*19750 kg	14350 kg	*23600 kg	17800 kg	*28900 kg	23000 kg	*33450 kg	31850 kg				
-1.5 m	*15350 kg	13000 kg	*18950 kg	14200 kg	*22950 kg	17550 kg	*27950 kg	22700 kg	*34600 kg	31750 kg	*22450 kg	*22450 kg		
-3.0 m	*16650 kg	14300 kg	*16650 kg	14350 kg	*21200 kg	17550 kg	*25900 kg	22750 kg	*31600 kg	*31600 kg	*34700 kg	*34700 kg	*24800 kg	*24800 kg
-4.5 m	*15800 kg	*15800 kg			*17650 kg	*17650 kg	*22300 kg	*22300 kg	*27050 kg	*27050 kg	*31950 kg	*31950 kg		
-6.0 m	*13750 kg	*13750 kg					*15900 kg	*15900 kg	*20150 kg	*20150 kg	*23250 kg	*23250 kg		

**PC950LC-11R HD spec.** Boom: 8400 mm Arm: 3700 mm Without bucket Shoe: 750 mm triple grouser

A	● MAX		10.5 m		9.0 m		7.5 m		6.0 m		4.5 m		3.0 m	
	Cf	Cs	Cf	Cs	Cf	Cs	Cf	Cs	Cf	Cs	Cf	Cs	Cf	Cs
7.5 m	*10900 kg	*10900 kg	*16650 kg	16650 kg	*19050 kg	*19050 kg								
6.0 m	*10900 kg	*10900 kg	*18150 kg	16250 kg	*20200 kg	*20200 kg	*23400 kg	*23400 kg	*28800 kg	*28800 kg				
4.5 m	*11150 kg	*11150 kg	*18800 kg	15750 kg	*21500 kg	20000 kg	*25700 kg	*25700 kg	*33150 kg	*33150 kg				
3.0 m	*11600 kg	*11600 kg	*19450 kg	15250 kg	*22650 kg	19150 kg	*27650 kg	24850 kg	*33900 kg	*33900 kg				
1.5 m	*12400 kg	12150 kg	*19850 kg	14800 kg	*23450 kg	18450 kg	*28800 kg	23800 kg	*28600 kg	*28600 kg				
0 m	*13550 kg	12400 kg	*19750 kg	14450 kg	*23600 kg	17950 kg	*28900 kg	23200 kg	*33450 kg	32100 kg				
-1.5 m	*15350 kg	13100 kg	*18950 kg	14350 kg	*22950 kg	17700 kg	*27950 kg	22900 kg	*34600 kg	32050 kg	*22450 kg	*22450 kg		
-3.0 m	*16650 kg	14450 kg	*16650 kg	14450 kg	*21200 kg	17750 kg	*25900 kg	22950 kg	*31600 kg	*31600 kg	*34700 kg	*34700 kg	*24800 kg	*24800 kg
-4.5 m	*15800 kg	*15800 kg			*17650 kg	*17650 kg	*22300 kg	*22300 kg	*27050 kg	*27050 kg	*31950 kg	*31950 kg		
-6.0 m	*13750 kg	*13750 kg					*15900 kg	*15900 kg	*20150 kg	*20150 kg	*23250 kg	*23250 kg		

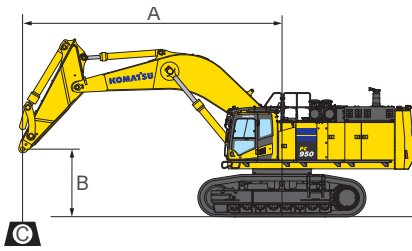
**PC950LC-11R HD spec.** Boom: 8400 mm Arm: 3700 mm Without bucket Shoe: 900 mm triple grouser

A	● MAX		10.5 m		9.0 m		7.5 m		6.0 m		4.5 m		3.0 m	
	Cf	Cs	Cf	Cs	Cf	Cs	Cf	Cs	Cf	Cs	Cf	Cs	Cf	Cs
7.5 m	*10900 kg	*10900 kg	*16650 kg	*16650 kg	*19050 kg	*19050 kg								
6.0 m	*10900 kg	*10900 kg	*18150 kg	16450 kg	*20200 kg	*20200 kg	*23400 kg	*23400 kg	*28800 kg	*28800 kg				
4.5 m	*11150 kg	*11150 kg	*18800 kg	15950 kg	*21500 kg	20250 kg	*25700 kg	*25700 kg	*33150 kg	*33150 kg				
3.0 m	*11600 kg	*11600 kg	*19450 kg	15450 kg	*22650 kg	19350 kg	*27650 kg	25150 kg	*33900 kg	*33900 kg				
1.5 m	*12400 kg	12300 kg	*19850 kg	15000 kg	*23450 kg	18650 kg	*28800 kg	24100 kg	28600 kg	*28600 kg				
0 m	*13550 kg	12550 kg	*19750 kg	14650 kg	*23600 kg	18200 kg	*28900 kg	23450 kg	*33450 kg	32550 kg				
-1.5 m	*15350 kg	13300 kg	*18950 kg	14500 kg	*22950 kg	17950 kg	*27950 kg	23200 kg	*34600 kg	32450 kg	*22450 kg	*22450 kg		
-3.0 m	*16650 kg	14650 kg	*16650 kg	14650 kg	*21200 kg	17950 kg	*25900 kg	23250 kg	*31600 kg	*31600 kg	*34700 kg	*34700 kg	*24800 kg	*24800 kg
-4.5 m	*15800 kg	*15800 kg			*17650 kg	*17650 kg	*22300 kg	*22300 kg	*27050 kg	*27000 kg	*31950 kg	*31950 kg		
-6.0 m	*13750 kg	*13750 kg					*15900 kg	*15900 kg	*20150 kg	*20150 kg	*23250 kg	*23250 kg		

\* Load is limited by hydraulic capacity rather than tipping. Ratings are based on ISO 10567. Rated loads do not exceed 87% of hydraulic lift capacity or 75% of tipping load.



# PC950/950LC-11R



- A: Reach from swing center
- B: Arm top pin height
- C: Lifting capacity
- ☉: Rating over front
- Cs: Rating over side
- ☉: Rating at maximum reach

**PC950-11R SE spec.** Boom: 7100 mm Arm: 2900 mm Without bucket Shoe: 650 mm triple grouser

A	☉ MAX		10.5 m		9.0 m		7.5 m		6.0 m		4.5 m		3.0 m	
	Cf	Cs	Cf	Cs	Cf	Cs	Cf	Cs	Cf	Cs	Cf	Cs	Cf	Cs
7.5 m	*22050 kg	21500 kg					*24950 kg	*24950 kg						
6.0 m	*22200 kg	18600 kg			*23250 kg	20000 kg	*26300 kg	*26300 kg	*31350 kg	*31350 kg	*41050 kg	*41050 kg		
4.5 m	21700 kg	16950 kg			*23900 kg	19400 kg	*28050 kg	25800 kg	*35050 kg	*35050 kg				
3.0 m	20800 kg	16200 kg			24200 kg	18800 kg	*29500 kg	24650 kg	*37850 kg	34250 kg				
1.5 m	20750 kg	16100 kg			23650 kg	18250 kg	*30150 kg	23750 kg	*38600 kg	32900 kg				
0 m	21600 kg	16700 kg			23300 kg	17950 kg	*29400 kg	23250 kg	*37200 kg	32300 kg				
-1.5 m	*21200 kg	18300 kg					*27000 kg	23100 kg	*33850 kg	32250 kg	*41450 kg	*41450 kg	*31500 kg	*31500 kg
-3.0 m	*19800 kg	*19800 kg					*21900 kg	*21900 kg	*28100 kg	*28100 kg	*33700 kg	*33700 kg		
-4.5 m	*15900 kg	*15900 kg							*18050 kg	*18050 kg				
-6.0 m														

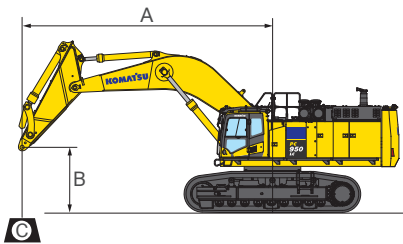
**PC950-11R SE spec.** Boom: 7100 mm Arm: 2900 mm Without bucket Shoe: 750 mm triple grouser

A	☉ MAX		10.5 m		9.0 m		7.5 m		6.0 m		4.5 m		3.0 m	
	Cf	Cs	Cf	Cs	Cf	Cs	Cf	Cs	Cf	Cs	Cf	Cs	Cf	Cs
7.5 m	*22050 kg	21500 kg					*24950 kg	*24950 kg						
6.0 m	*22200 kg	18600 kg			*23250 kg	20000 kg	*26300 kg	*26300 kg	*31350 kg	*31350 kg	*41050 kg	*41050 kg		
4.5 m	21700 kg	16950 kg			*23900 kg	19400 kg	*28050 kg	25800 kg	*35050 kg	*35050 kg				
3.0 m	20800 kg	16200 kg			24200 kg	18800 kg	*29500 kg	24650 kg	*37850 kg	34250 kg				
1.5 m	20750 kg	16100 kg			23650 kg	18250 kg	*30150 kg	23750 kg	*38600 kg	32900 kg				
0 m	21600 kg	16700 kg			23300 kg	17950 kg	29400 kg	23250 kg	*37200 kg	32300 kg				
-1.5 m	*21200 kg	18300 kg					*27000 kg	23100 kg	*33850 kg	32250 kg	*41450 kg	*41450 kg	*31500 kg	*31500 kg
-3.0 m	*19800 kg	*19800 kg					*21900 kg	*21900 kg	*28100 kg	*28100 kg	*33700 kg	*33700 kg		
-4.5 m	*15900 kg	*15900 kg							*18050 kg	*18050 kg				
-6.0 m														

**PC950-11R SE spec.** Boom: 7100 mm Arm: 2900 mm Without bucket Shoe: 900 mm triple grouser

A	☉ MAX		10.5 m		9.0 m		7.5 m		6.0 m		4.5 m		3.0 m	
	Cf	Cs	Cf	Cs	Cf	Cs	Cf	Cs	Cf	Cs	Cf	Cs	Cf	Cs
7.5 m	*22050 kg	21900 kg					*24950 kg	*24950 kg						
6.0 m	*22200 kg	18950 kg			*23250 kg	20350 kg	*26300 kg	*26300 kg	*31350 kg	*31350 kg	*41050 kg	*41050 kg		
4.5 m	22150 kg	17900 kg			*23900 kg	19800 kg	*28050 kg	26250 kg	*35050 kg	*35050 kg				
3.0 m	21200 kg	16500 kg			*24500 kg	19150 kg	*29500 kg	25100 kg	*37850 kg	34850 kg				
1.5 m	21150 kg	16400 kg			24100 kg	18600 kg	*30150 kg	24200 kg	*38600 kg	33500 kg				
0 m	*21800 kg	17050 kg			*23600 kg	18300 kg	*29400 kg	23700 kg	*37200 kg	32900 kg				
-1.5 m	*21200 kg	18700 kg					*27000 kg	23550 kg	*33850 kg	32850 kg	*41450 kg	*41450 kg	*31500 kg	*31500 kg
-3.0 m	*19800 kg	*19800 kg					*21900 kg	*21900 kg	*28100 kg	*28100 kg	*33700 kg	*33700 kg		
-4.5 m	*15900 kg	*15900 kg							*18050 kg	*18050 kg				
-6.0 m														

\* Load is limited by hydraulic capacity rather than tipping. Ratings are based on ISO 10567. Rated loads do not exceed 87% of hydraulic lift capacity or 75% of tipping load.



A: Reach from swing center  
 B: Arm top pin height  
 C: Lifting capacity

Cf: Rating over front  
 Cs: Rating over side  
 Ⓢ: Rating at maximum reach

**PC950LC-11R SE spec.** Boom: 7100 mm Arm: 2900 mm Without bucket Shoe: 650 mm triple grouser

B	A		10.5 m		9.0 m		7.5 m		6.0 m		4.5 m		3.0 m	
	Ⓢ MAX		Cf	Cs	Cf	Cs	Cf	Cs	Cf	Cs	Cf	Cs	Cf	Cs
7.5 m	*22050 kg	*22050 kg					*24950 kg	*24950 kg						
6.0 m	*22200 kg	19150 kg			*23250 kg	20600 kg	*26300 kg	*26300 kg	*31350 kg	*31350 kg	*41050 kg	*41050 kg		
4.5 m	*22350 kg	17500 kg			*23900 kg	20000 kg	*28050 kg	26600 kg	*35050 kg	*35050 kg				
3.0 m	*22150 kg	16700 kg			*24500 kg	19400 kg	*29500 kg	25400 kg	*37850 kg	35350 kg				
1.5 m	*22050 kg	16600 kg			*24550 kg	18850 kg	*30150 kg	24500 kg	*38600 kg	33950 kg				
0 m	*21800 kg	17250 kg			*23600 kg	18550 kg	*29400 kg	24000 kg	*37200 kg	33350 kg				
-1.5 m	*21200 kg	18900 kg					*27000 kg	23900 kg	*33850 kg	33300 kg	*41450 kg	*41450 kg	*31500 kg	*31500 kg
-3.0 m	*19800 kg	*19800 kg					*21900 kg	*21900 kg	*28100 kg	*28100 kg	*33700 kg	*33700 kg		
-4.5 m	*15900 kg	*15900 kg							*18050 kg	*18050 kg				
-6.0 m														

**PC950LC-11R SE spec.** Boom: 7100 mm Arm: 2900 mm Without bucket Shoe: 750 mm triple grouser

B	A		10.5 m		9.0 m		7.5 m		6.0 m		4.5 m		3.0 m	
	Ⓢ MAX		Cf	Cs	Cf	Cs	Cf	Cs	Cf	Cs	Cf	Cs	Cf	Cs
7.5 m	*22050 kg	*22050 kg					*24950 kg	*24950 kg						
6.0 m	*22200 kg	19300 kg			*23250 kg	20750 kg	*26300 kg	*26300 kg	*31350 kg	*31350 kg	*41050 kg	*41050 kg		
4.5 m	*22350 kg	17650 kg			*23900 kg	20150 kg	*28050 kg	26800 kg	*35050 kg	*35050 kg				
3.0 m	*22150 kg	16850 kg			*24500 kg	19550 kg	*29500 kg	25600 kg	*37850 kg	35600 kg				
1.5 m	*22050 kg	16750 kg			*24550 kg	19000 kg	*30150 kg	24700 kg	*38600 kg	34250 kg				
0 m	*21800 kg	17400 kg			*23600 kg	18700 kg	*29400 kg	24200 kg	*37200 kg	33650 kg				
-1.5 m	*21200 kg	19100 kg					*27000 kg	24050 kg	*33850 kg	33600 kg	*41450 kg	*41450 kg	*31500 kg	*31500 kg
-3.0 m	*19800 kg	*19800 kg					*21900 kg	*21900 kg	*28100 kg	*28100 kg	*33700 kg	*33700 kg		
-4.5 m	*15900 kg	*15900 kg							*18050 kg	*18050 kg				
-6.0 m														

**PC950LC-11R SE spec.** Boom: 7100 mm Arm: 2900 mm Without bucket Shoe: 900 mm triple grouser

B	A		10.5 m		9.0 m		7.5 m		6.0 m		4.5 m		3.0 m	
	Ⓢ MAX		Cf	Cs	Cf	Cs	Cf	Cs	Cf	Cs	Cf	Cs	Cf	Cs
7.5 m	*22050 kg	*22050 kg					*24950 kg	*24950 kg						
6.0 m	*22200 kg	19500 kg			*23250 kg	21000 kg	*26300 kg	*26300 kg	*31350 kg	*31350 kg	*41050 kg	*41050 kg		
4.5 m	*22350 kg	17850 kg			*23900 kg	20400 kg	*28050 kg	27100 kg	*35050 kg	*35050 kg				
3.0 m	*22150 kg	17050 kg			*24500 kg	19750 kg	*29500 kg	25900 kg	*37850 kg	36000 kg				
1.5 m	*22050 kg	16950 kg			*24550 kg	19250 kg	*30150 kg	25000 kg	*38600 kg	34650 kg				
0 m	*21800 kg	17600 kg			*23600 kg	18950 kg	*29400 kg	24500 kg	*37200 kg	34050 kg				
-1.5 m	*21200 kg	19300 kg					*27000 kg	24350 kg	*33850 kg	*33850 kg	*41450 kg	*41450 kg	*31500 kg	*31500 kg
-3.0 m	*19800 kg	*19800 kg					*21900 kg	*21900 kg	*28100 kg	*28100 kg	*33700 kg	*33700 kg		
-4.5 m	*15900 kg	*15900 kg							*18050 kg	*18050 kg				
-6.0 m														

\* Load is limited by hydraulic capacity rather than tipping. Ratings are based on ISO 10567. Rated loads do not exceed 87% of hydraulic lift capacity or 75% of tipping load.

- The Bluetooth® word mark and logos are registered trademarks owned by Bluetooth SIG, Inc. and any use of such marks by KOMATSU Group is under license. Other trademarks and trade names are those of their respective owners.
- Up to 20% blended biodiesel fuel and paraffine fuel can be used. Please consult your Komatsu distributor for detail.
- Materials and specifications are subject to change without notice.
- **KOMATSU** is a trademark of Komatsu Ltd. Japan.

---

Your Komatsu partner:

**KOMATSU**

<https://www.komatsu.jp/en>

