

Komtrax remote monitoring



Komtrax is Komatsu's
remote equipment and
fleet monitoring system.

What is Komtrax?

Komtrax is Komatsu's remote equipment and fleet monitoring system.

This cutting-edge wireless technology offers a secure, user-friendly, web-based application that delivers critical information anytime,

Komtrax gathers machine information to make fleet management easier and more effective. This data provides key information about your operators and machine's conditions.

A variety of charts and graphs, as well as useful search and filter parameters, make finding what you need fast and easy. Data can also be provided for custom office applications or downloaded directly into spreadsheet applications.

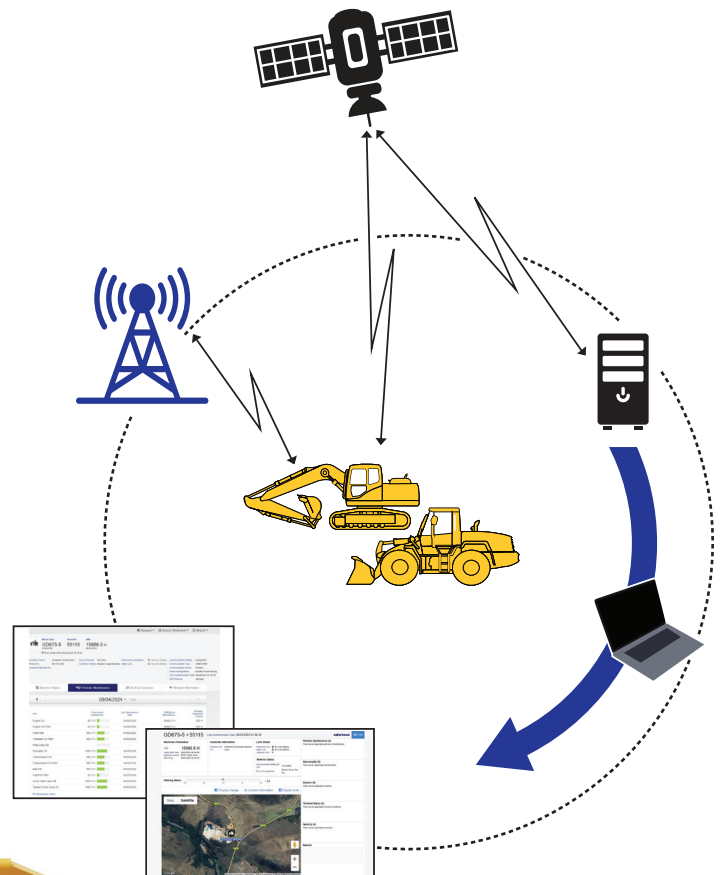


Fact-based fleet and asset management

Komtrax tells you where your machines are, what they are doing, and how they are doing it. It provides 'total fleet management' capabilities for improved fleet utilization, reduced downtime, more precise job costing, and lower owning and operating costs.

Equipment operation information

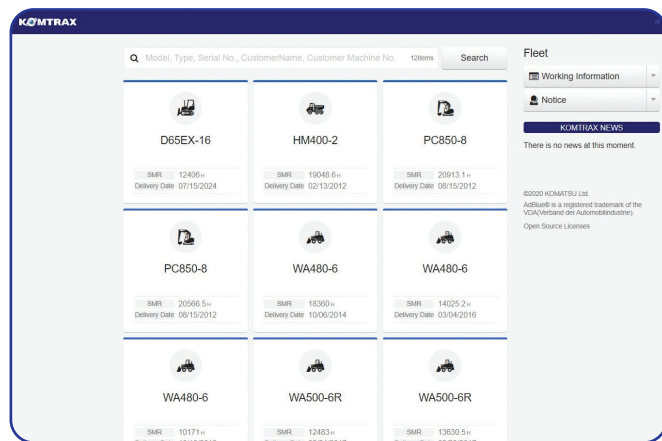
Komtrax helps keep your machines operating at peak performance and provides useful information on operator habits and actions. It also provides the information you need to maximize output through increased efficiency, just-in-time maintenance, preventive maintenance or rebuild scheduling and operator training.



Komtrax provides timely information so that you, your distributor, and Komatsu can be proactive and respond faster.

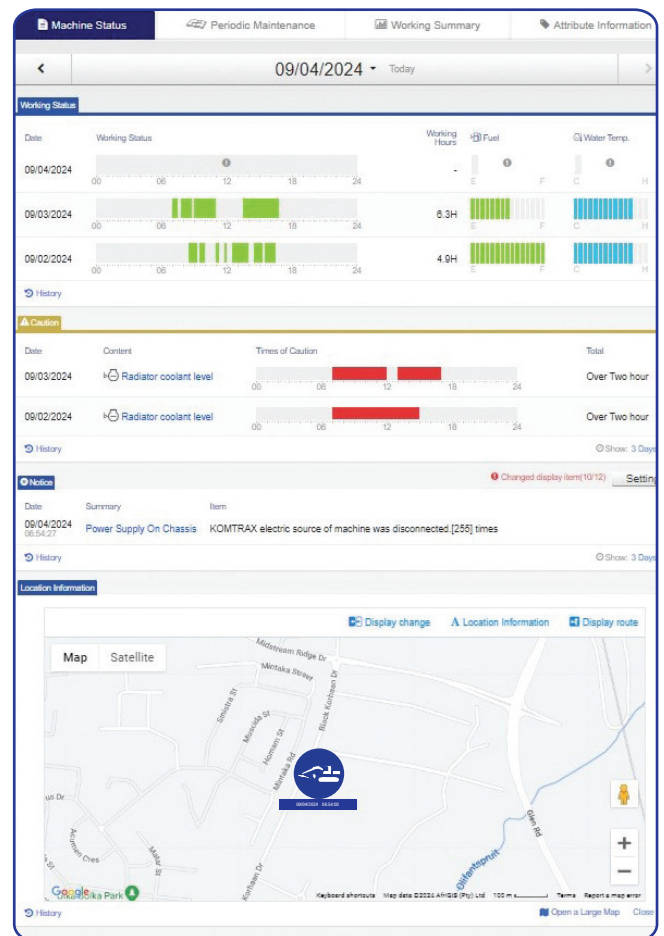
Improved search

New search function allows to search for machines by job site, customer management number, model or serial number.



Convenient

Convenient one-page summary of machine status, working information, caution, notification and location.



Working hour trend

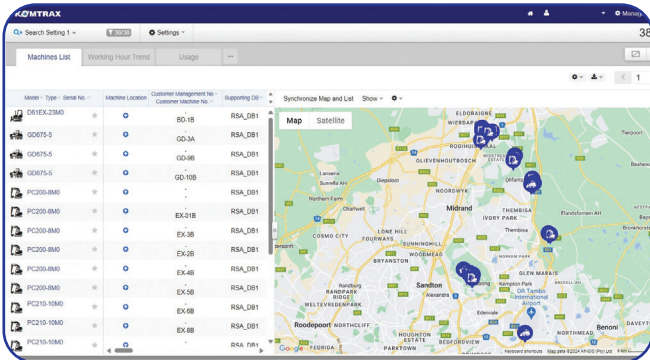
A new pre-built summary of the monthly and daily working hours of your fleet.

Model	Type	Serial No.	Machine Location	Customer Management No. Customer Machine No.	SMR	09/2023			
						Working Days	Working Hours	Daily Avg.	Working Day
D155AX-6	*			-	9706.7 h	6	10	1.6	-
D155AX-6	*			DK8002	13152.7 h	30	414	13.8	17
D155AX-6	*			-	10207 h	22	234	10.6	24
D155AX-6	*			-	6551 h	-	-	-	-
D155AX-6	*			-	11392.5 h	-	-	-	-
D155AX-6	*			-	3214.5 h	26	212	8.1	23
D275AX-5E0	*			DK9001	9726.8 h	-	-	-	-
D275AX-5E0	*			DK9002	17438.5 h	0	0	-	2
D275AX-5E0	*			-	19514.8 h	17	62	3.6	23
D275AX-5E0	*			-	15686.3 h	24	247	10.2	28
D275AX-5E0	*			-	16199.5 h	27	219	8.1	30



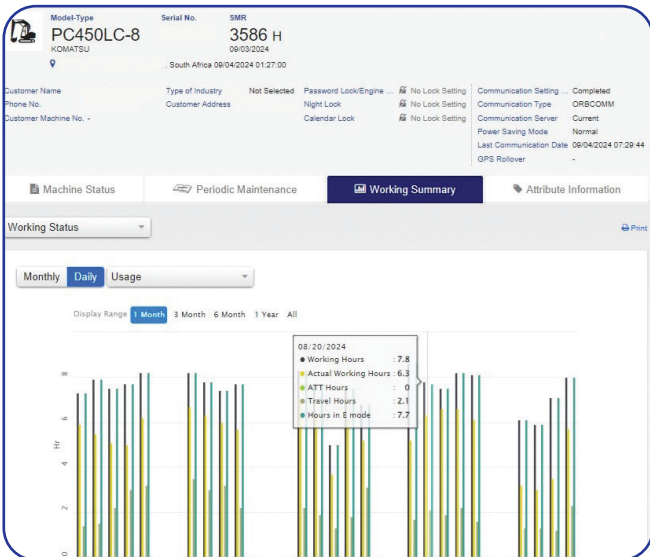
Interactive maps

Interactive maps make it easy to filter fleet data.



Interactive charts

Visualize the productivity of machines with new, interactive charts.



The data display period can easily be changed and customised for different datasets.

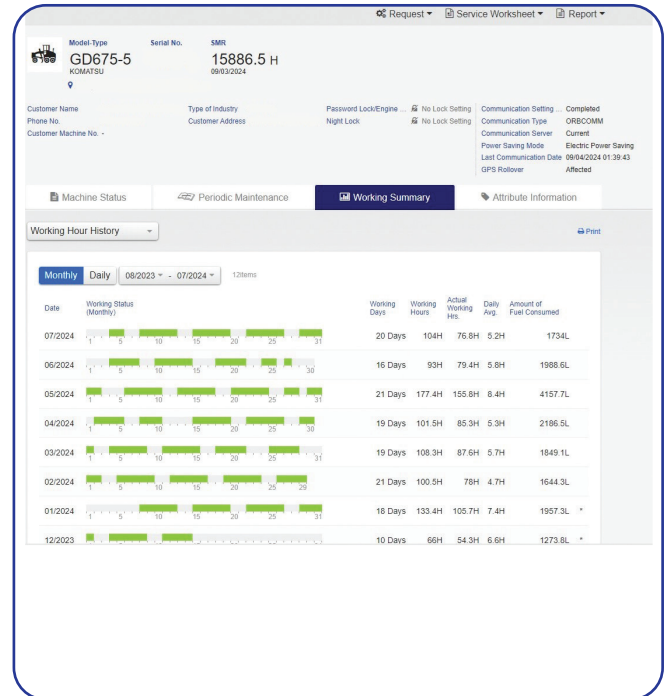
Engine lock

A number of engine lock and unlock capabilities ensure that machines only operate in designated areas and during designated days and times.



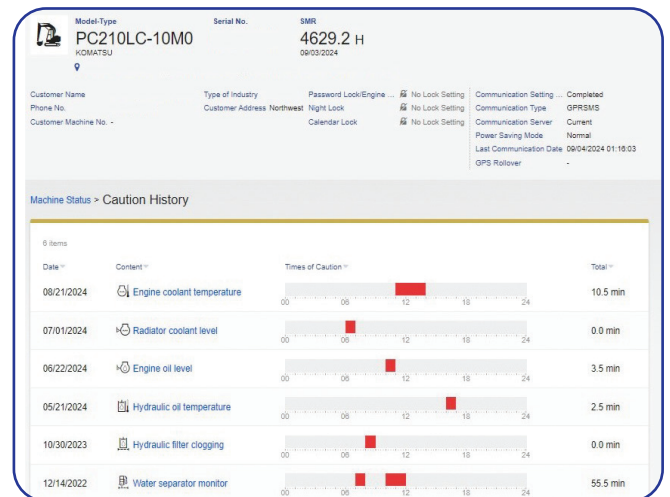
Interactive tables

Visualise the daily or monthly working metrics of machines with the new interactive tables.



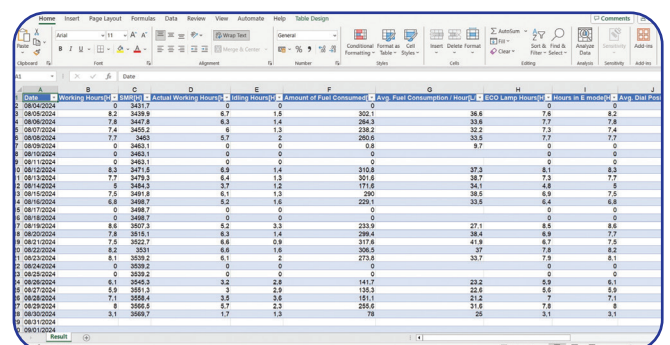
Health alerts

Quickly access machine health alerts.



Download data

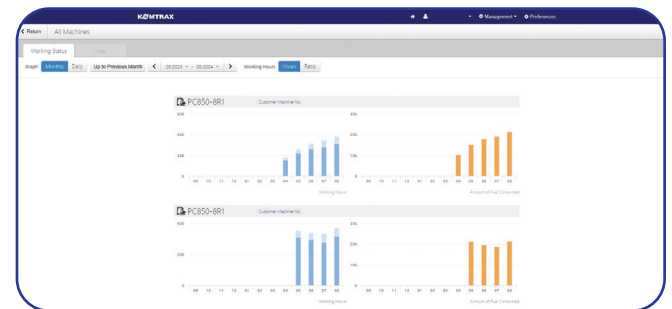
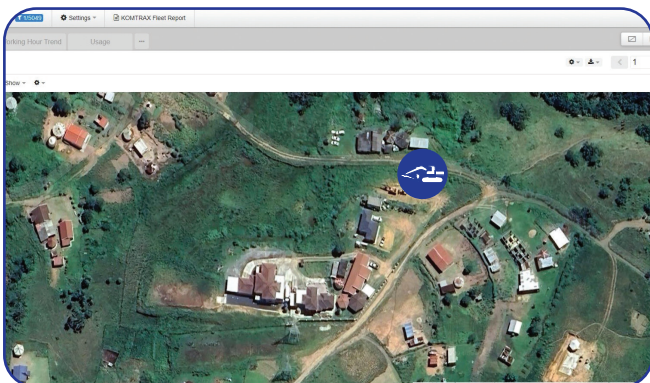
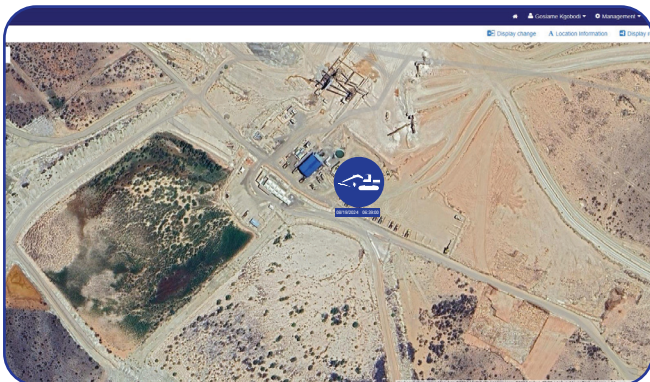
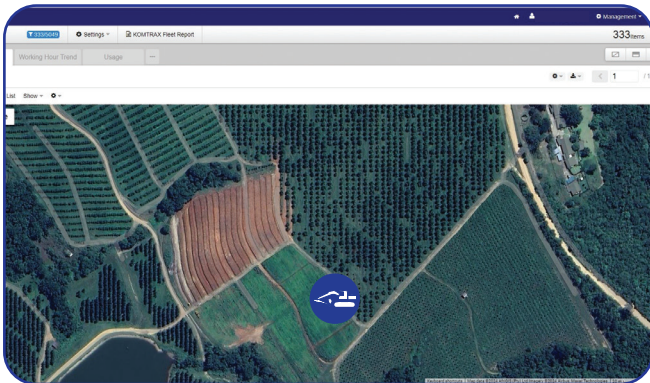
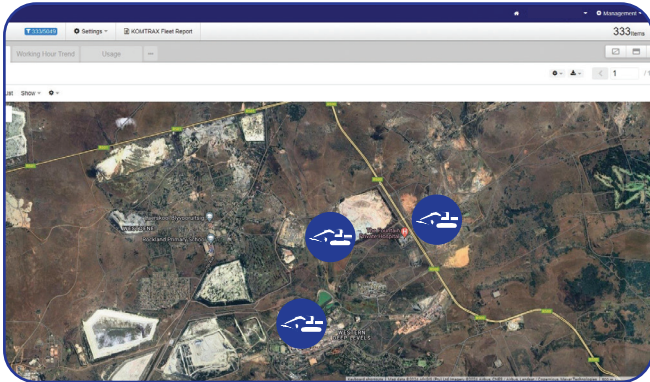
Easily download your data for further analysis.



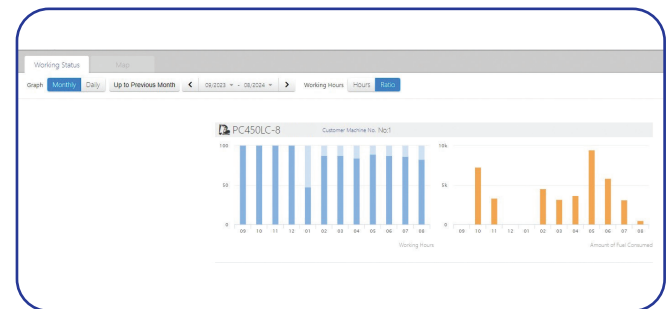
The updated Komtrax gives more information about machines in a user-friendly view.

Improved jobsite management

Tracking equipment provides detailed data on working hours and fuel consumption, enabling better performance management of the fleet.



Charts illustrate working hours and fuel consumption at each job site.



Komtrax mobile app

Manage your fleet anytime, anywhere.

- ✓ This mobile website is user friendly
- ✓ You can view your fleet from your mobile phone
- ✓ No need to open your laptop to access Komtrax

Key benefits:

- Check daily, weekly, monthly summaries of your fleet
- Manage your fleet easily and more effectively
- Immediately access key information about your machine's condition and operation

FAQs:

- How many hours are my machines accumulating?
- Where are my machines operating?
- Which machines are critical?
- Why aren't my machines communicating?



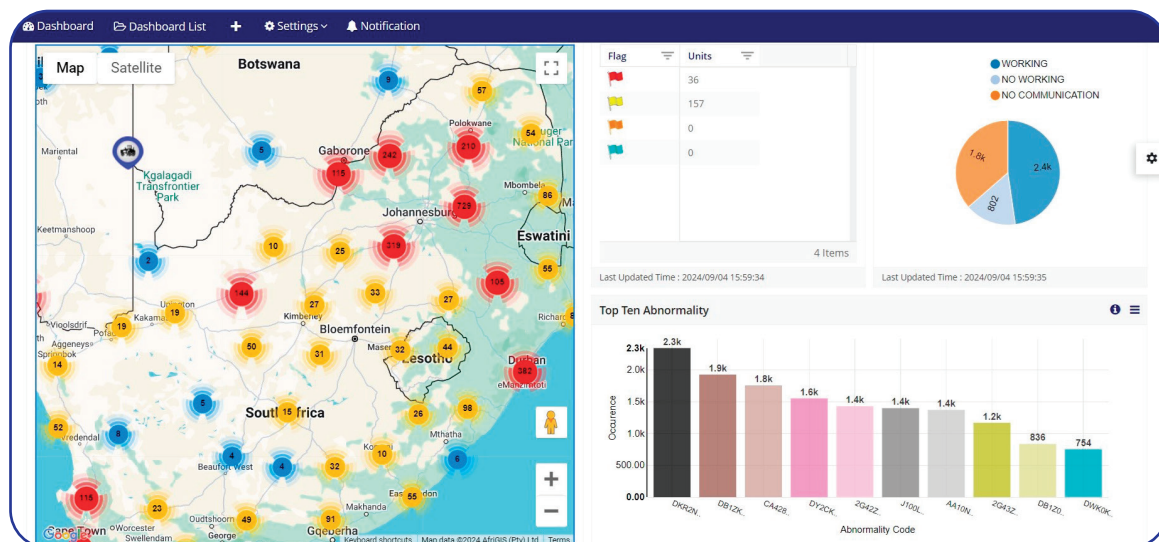
Scan the QR code below to access our mobile app or follow this link: <https://mobile.komtrax.komatsu/mobile/>



Komtrax ISO API

Overview

- Business improvement for construction equipment owner/users. Get operation data (operating hours, fuel usage, fault code, location, etc.) by telematics, and import to user's internal systems to improve their business activities.
- Komatsu is providing Komtrax CFM (customer fleet monitoring) web application and API that conforms to ISO15143-3.
 - ✓ Users can directly obtain data by requesting data from the Komtrax ISO API
 - ✓ Users can import the data into their own application
 - ✓ Since the data complies with ISO15143-3, it can be used with other OEMs data that complies with ISO15143-3 in the user's own application



There are 2 ways to obtain data:

Snapshot (latest value) and Time series (historical data), and the available data items vary by type:

Snapshot (latest value)

a. Latest value for all machines

- Machine header information
- Last known location
- Operating hours
- Cumulative fuel used
- Fuel used in the preceding 24 hours
- Cumulative distance travelled
- Fuel remaining ratio
- Def (Diesel exhaust fluid) remaining ratio
- Peak daily speed
- Cumulative payload total
- Cumulative idle non-operating hours

b. Latest value for one specified machine

Time series (historical data)

All item links for one specified machine such as:

- Locations
- Operating hours
- Cumulative fuel used
- Fuel used in the preceding 24 hours
- Cumulative distance traveled
- Fuel remaining ratio
- Def (Diesel exhaust fluid) remaining ratio
- Peak daily speed
- Cumulative payload total
- Cumulative idle non-operating hours
- Fault code

Product designs, specifications and/or data in this document are provided for informational purposes only and are not warranties of any kind. Product designs and/or specifications may be changed at any time without notice. The only warranties that apply to sales of products and services are Komatsu's standard written warranties, which will be furnished upon request.

Komatsu and other trademarks and service marks used herein are the property of Komatsu Ltd. or its subsidiaries, or the respective owners or licensees.



www.komatsu.co.za

+2711 923 1000

